

CRACR2A Rabbit pAb

Catalog No.: A13839

Basic Information

Observed MW

45kDa

Calculated MW

83kDa

Category

Primary antibody

Applications

ELISA, WB

Cross-Reactivity

Human, Mouse, Rat

Background

Enables GTPase activity and calcium ion binding activity. Involved in several processes, including activation of store-operated calcium channel activity; positive regulation of JNK cascade; and store-operated calcium entry. Located in several cellular components, including Golgi apparatus; Weibel-Palade body; and immunological synapse.

Recommended Dilutions

WB 1:500 - 1:2000

Immunogen Information

Gene ID

84766

Swiss Prot

Q9BSW2

Immunogen

Recombinant fusion protein containing a sequence corresponding to amino acids 1-200 of human CRACR2A (NP_001138430.1).

Synonyms

RAB46; EFCAB4B; CRACR2A

Contact

 | 400-999-6126

 | cn.market@abclonal.com.cn

 | www.abclonal.com.cn

Product Information

Source

Rabbit

Isotype

IgG

Purification

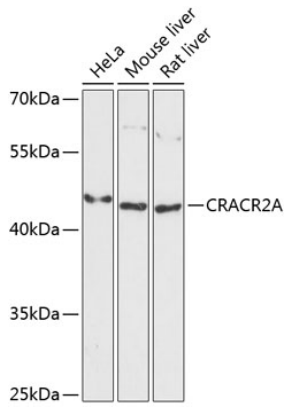
Affinity purification

Storage

Store at -20°C. Avoid freeze / thaw cycles.

Buffer: PBS with 0.01% thimerosal, 50% glycerol, pH7.3.

Validation Data



Western blot analysis of various lysates using CRACR2A Rabbit pAb (A13839) at 1:3000 dilution.
Secondary antibody: HRP Goat Anti-Rabbit IgG (H+L) (AS014) at 1:10000 dilution.
Lysates/proteins: 25µg per lane.
Blocking buffer: 3% nonfat dry milk in TBST.
Detection: ECL Basic Kit (RM00020).
Exposure time: 90s.