

CPT1C Rabbit pAb

Catalog No.: A13849

Basic Information

Observed MW

102kDa

Calculated MW

91kDa

Category

Primary antibody

Applications

ELISA, WB, IF/ICC

Cross-Reactivity

Human, Mouse, Rat

Background

This gene encodes a member of the carnitine/choline acetyltransferase family. The encoded protein regulates the beta-oxidation and transport of long-chain fatty acids into mitochondria, and may play a role in the regulation of feeding behavior and whole-body energy homeostasis. Alternatively spliced transcript variants encoding multiple protein isoforms have been observed for this gene.

Recommended Dilutions

WB	1:2000 - 1:8000
IF/ICC	1:50 - 1:200

Immunogen Information

Gene ID

126129

Swiss Prot

Q8TCG5

Immunogen

Recombinant fusion protein containing a sequence corresponding to amino acids 270-400 of human CPT1C (NP_001129524.1).

Synonyms

CATL1; CPT1P; CPTIC; SPG73; CPT1-B; CPTI-B; CPT1C

Contact

	400-999-6126
	cn.market@abclonal.com.cn
	www.abclonal.com.cn

Product Information

Source

Rabbit

Isotype

IgG

Purification

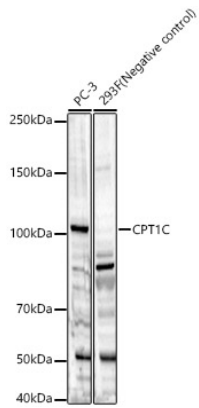
Affinity purification

Storage

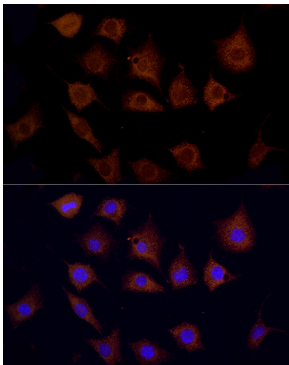
Store at -20°C. Avoid freeze / thaw cycles.

Buffer: PBS with 0.01% thimerosal, 50% glycerol, pH7.3.

Validation Data



Western blot analysis of various lysates, using CPT1C Rabbit pAb (A13849) at 1:7000 dilution. Secondary antibody: HRP Goat Anti-Rabbit IgG (H+L) (AS014) at 1:10000 dilution. Lysates/proteins: 25µg per lane. Blocking buffer: 3% nonfat dry milk in TBST. Detection: ECL Basic Kit (RM00020). Exposure time: 180s.



Immunofluorescence analysis of L929 using CPT1C antibody (A13849) at dilution of 1:100. Blue: DAPI for nuclear staining.