

KIF19 Rabbit pAb

Catalog No.: A13868

Basic Information

Observed MW

111kDa

Calculated MW

111kDa

Category

Primary antibody

Applications

WB,ELISA

Cross-Reactivity

Human, Mouse, Rat

Background

Predicted to enable microtubule binding activity and plus-end-directed microtubule motor activity. Predicted to be involved in axonemal microtubule depolymerization; microtubule-based movement; and plus-end specific microtubule depolymerization. Predicted to be located in cilium. Predicted to be part of kinesin complex. Predicted to be active in microtubule.

Recommended Dilutions

WB 1:500 - 1:2000

ELISA Recommended starting concentration is 1 µg/mL. Please optimize the concentration based on your specific assay requirements.

Immunogen Information

Gene ID

124602

Swiss Prot

Q2TAC6

Immunogen

Recombinant protein (or fragment). This information is considered to be commercially sensitive.

Synonyms

KIF19A; KIF19

Contact

 | 400-999-6126

 | cn.market@abclonal.com.cn

 | www.abclonal.com.cn

Product Information

Source

Rabbit

Isotype

IgG

Purification

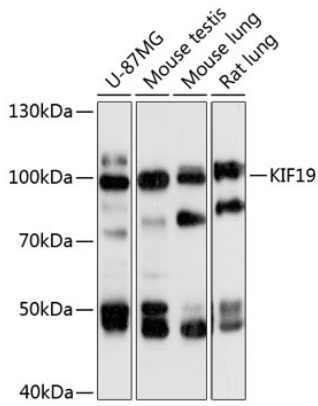
Affinity purification

Storage

Store at -20°C. Avoid freeze / thaw cycles.

Buffer: PBS with 0.01% thimerosal, 50% glycerol, pH7.3.

Validation Data



Western blot analysis of various lysates using KIF19 Rabbit pAb (A13868) at 1:3000 dilution.
Secondary antibody: HRP-conjugated Goat anti-Rabbit IgG (H+L) (AS014) at 1:10000 dilution.
Lysates/proteins: 25 μ g per lane.
Blocking buffer: 3% nonfat dry milk in TBST.
Detection: ECL Basic Kit (RM00020).
Exposure time: 10s.