

# LETM2 Rabbit pAb

Catalog No.: A13869

## Basic Information

### Observed MW

54kDa

### Calculated MW

56kDa

### Category

Primary antibody

### Applications

ELISA, WB

### Cross-Reactivity

Human, Mouse, Rat

## Background

Predicted to enable ribosome binding activity. Predicted to be involved in cellular metal ion homeostasis. Predicted to be located in mitochondrial inner membrane. Predicted to be integral component of membrane.

## Recommended Dilutions

WB 1:500 - 1:2000

## Immunogen Information

### Gene ID

137994

### Swiss Prot

Q2VYF4

### Immunogen

Recombinant fusion protein containing a sequence corresponding to amino acids 257-396 of human LETM2 (NP\_653253.1).

### Synonyms

SLC55A2; LETM2

## Contact

☎ | 400-999-6126

✉ | [cn.market@abclonal.com.cn](mailto:cn.market@abclonal.com.cn)

🌐 | [www.abclonal.com.cn](http://www.abclonal.com.cn)

## Product Information

### Source

Rabbit

### Isotype

IgG

### Purification

Affinity purification

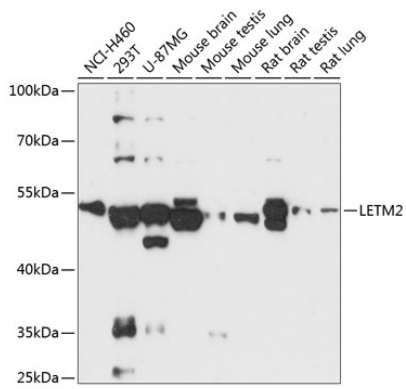
### Storage

Store at -20°C. Avoid freeze / thaw cycles.

Buffer: PBS with 0.01% thimerosal, 50% glycerol, pH7.3.

## Validation Data

---



Western blot analysis of various lysates using LETM2 Rabbit pAb (A13869) at 1:3000 dilution.  
Secondary antibody: HRP Goat Anti-Rabbit IgG (H+L) (AS014) at 1:10000 dilution.  
Lysates/proteins: 25µg per lane.  
Blocking buffer: 3% nonfat dry milk in TBST.  
Detection: ECL Basic Kit (RM00020).  
Exposure time: 90s.