

EIF4E3 Rabbit pAb

Catalog No.: A13879

Basic Information

Observed MW

24kDa

Calculated MW

24kDa

Category

Primary antibody

Applications

ELISA, WB

Cross-Reactivity

Mouse, Rat

Background

EIF4E3 belongs to the EIF4E family of translational initiation factors that interact with the 5-prime cap structure of mRNA and recruit mRNA to the ribosome (Joshi et al., 2004 [PubMed 15153109]).

Recommended Dilutions

WB 1:500 - 1:2000

Immunogen Information

Gene ID

317649

Swiss Prot

Q8N5X7

Immunogen

Recombinant fusion protein containing a sequence corresponding to amino acids 1-118 of human EIF4E3 (NP_775495.1).

Synonyms

eIF-4E3; eIF4E-3; EIF4E3

Contact

☎ | 400-999-6126

✉ | cn.market@abclonal.com.cn

🌐 | www.abclonal.com.cn

Product Information

Source

Rabbit

Isotype

IgG

Purification

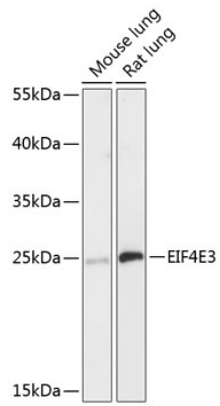
Affinity purification

Storage

Store at -20°C. Avoid freeze / thaw cycles.

Buffer: PBS with 0.01% thimerosal, 50% glycerol, pH7.3.

Validation Data



Western blot analysis of various lysates using EIF4E3 Rabbit pAb (A13879) at 1:3000 dilution.
Secondary antibody: HRP Goat Anti-Rabbit IgG (H+L) (AS014) at 1:10000 dilution.
Lysates/proteins: 25µg per lane.
Blocking buffer: 3% nonfat dry milk in TBST.
Detection: ECL Basic Kit (RM00020).
Exposure time: 30s.