

FCGR2A Rabbit pAb

Catalog No.: A1388

Basic Information

Observed MW

40-50kDa

Calculated MW

35kDa

Category

Primary antibody

Applications

ELISA, WB, IF/ICC

Cross-Reactivity

Human, Mouse, Rat

Background

This gene encodes one member of a family of immunoglobulin Fc receptor genes found on the surface of many immune response cells. The protein encoded by this gene is a cell surface receptor found on phagocytic cells such as macrophages and neutrophils, and is involved in the process of phagocytosis and clearing of immune complexes. Alternative splicing results in multiple transcript variants.

Recommended Dilutions

WB 1:500 - 1:1000

IF/ICC 1:50 - 1:200

Immunogen Information

Gene ID

2212

Swiss Prot

P12318

Immunogen

A synthetic peptide corresponding to a sequence within amino acids 34-316 of human FCGR2A (NP_001129691.1).

Synonyms

CD32; FCG2; FcGR; CD32A; CDw32; FCGR2; IGFR2; FCGR2A1; FcgammaRIIa; FCGR2A

Contact

☎ | 400-999-6126

✉ | cn.market@abclonal.com.cn

🌐 | www.abclonal.com.cn

Product Information

Source

Rabbit

Isotype

IgG

Purification

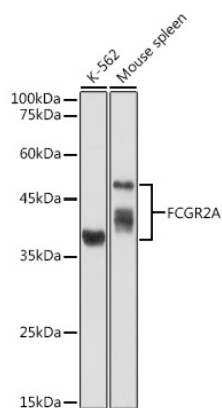
Affinity purification

Storage

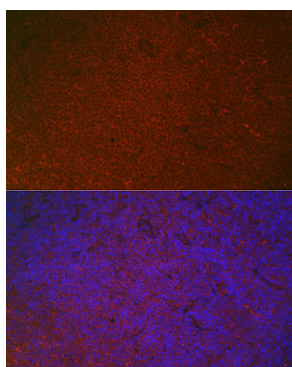
Store at -20°C. Avoid freeze / thaw cycles.

Buffer: PBS with 0.05% proclin300, 50% glycerol, pH7.3.

Validation Data



Western blot analysis of extracts of various cell lines, using FCGR2A antibody (A1388) at 1:1000 dilution.
Secondary antibody: HRP Goat Anti-Rabbit IgG (H+L) (AS014) at 1:10000 dilution.
Lysates/proteins: 25µg per lane.
Blocking buffer: 3% nonfat dry milk in TBST.
Detection: ECL Basic Kit (RM00020).
Exposure time: 90s.



Immunofluorescence analysis of mouse spleen using FCGR2A Rabbit pAb (A1388) at dilution of 1:100 (40x lens). Blue: DAPI for nuclear staining.