

DYNLL2 Rabbit pAb

Catalog No.: A13889

Basic Information

Observed MW

13kDa

Calculated MW

10kDa

Category

Primary antibody

Applications

WB, ELISA

Cross-Reactivity

Mouse, Rat

Background

Predicted to enable dynein intermediate chain binding activity and dynein light intermediate chain binding activity. Predicted to be involved in cilium assembly. Located in 9+0 non-motile cilium and centrosome. Is active in glutamatergic synapse and postsynapse.

Recommended Dilutions

WB 1:500 - 1:2000

ELISA Recommended starting concentration is 1 µg/mL. Please optimize the concentration based on your specific assay requirements.

Immunogen Information

Gene ID

140735

Swiss Prot

Q96FJ2

Immunogen

Recombinant protein (or fragment). This information is considered to be commercially sensitive.

Synonyms

Dlc2; DNCL1B; RSPH22; DYNLL2

Contact

 | 400-999-6126

 | cn.market@abclonal.com.cn

 | www.abclonal.com.cn

Product Information

Source

Rabbit

Isotype

IgG

Purification

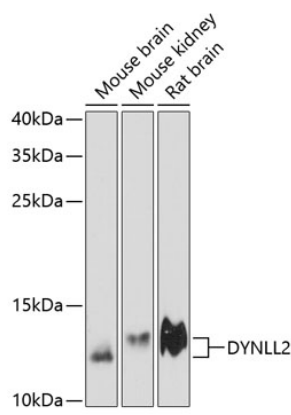
Affinity purification

Storage

Store at -20°C. Avoid freeze / thaw cycles.

Buffer: PBS with 0.01% thimerosal, 50% glycerol, pH 7.3.

Validation Data



Western blot analysis of various lysates using DYNLL2 Rabbit pAb (A13889) at 1:3000 dilution.
Secondary antibody: HRP-conjugated Goat anti-Rabbit IgG (H+L) (AS014) at 1:10000 dilution.
Lysates/proteins: 25µg per lane.
Blocking buffer: 3% nonfat dry milk in TBST.
Detection: ECL Enhanced Kit (RM00021).
Exposure time: 90s.