

CD146/MCAM Rabbit pAb

Catalog No.: A13927 **2 Publications**

Basic Information

Observed MW

120kDa

Calculated MW

72kDa

Category

Primary antibody

Applications

ELISA, WB, IHC-P, IF/ICC

Cross-Reactivity

Human, Mouse, Rat

Background

Involved in glomerular filtration and vascular wound healing. Acts upstream of or within angiogenesis. Located in external side of plasma membrane. Biomarker of chronic obstructive pulmonary disease and uveal melanoma.

Recommended Dilutions

WB	1:100 - 1:500
IHC-P	1:50 - 1:200
IF/ICC	1:50 - 1:200

Immunogen Information

Gene ID

4162

Swiss Prot

P43121

Immunogen

Recombinant fusion protein containing a sequence corresponding to amino acids 26-350 of human CD146/MCAM (NP_006491.2).

Synonyms

CD146; MUC18; HEMCAM; METCAM; MeICAM; CD146/MCAM

Contact

☎ | 400-999-6126

✉ | cn.market@abclonal.com.cn

🌐 | www.abclonal.com.cn

Product Information

Source

Rabbit

Isotype

IgG

Purification

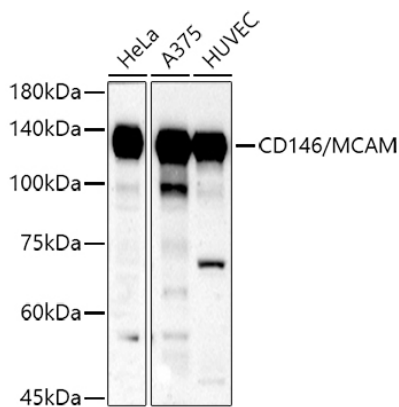
Affinity purification

Storage

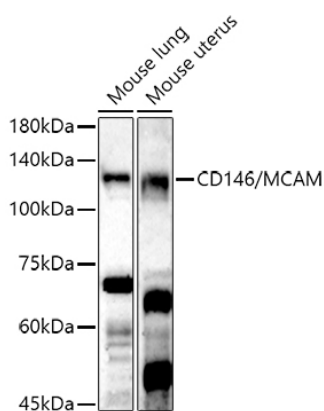
Store at -20°C. Avoid freeze / thaw cycles.

Buffer: PBS with 0.05% proclin300, 50% glycerol, pH7.3.

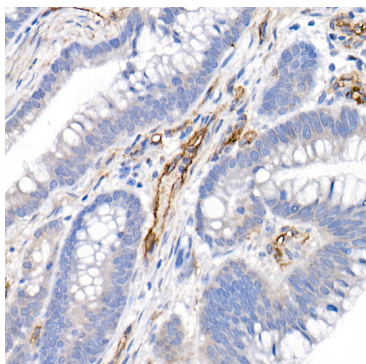
Validation Data



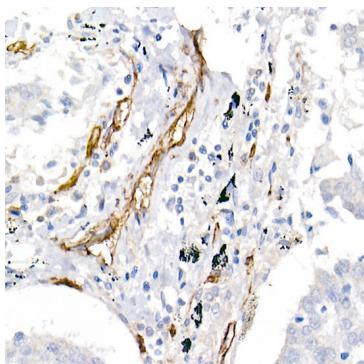
Western blot analysis of various lysates using CD146/MCAM Rabbit pAb (A13927) at 1:500 dilution. Secondary antibody: HRP Goat Anti-Rabbit IgG (H+L) (AS014) at 1:10000 dilution. Lysates/proteins: 25µg per lane. Blocking buffer: 3% nonfat dry milk in TBST. Detection: ECL Basic Kit (RM00020). Exposure time: 180s.



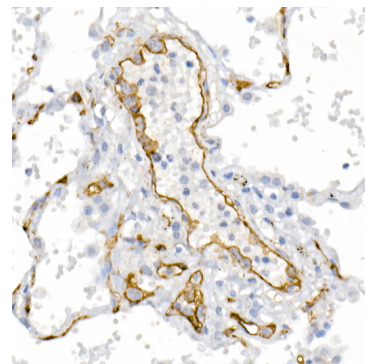
Western blot analysis of various lysates using CD146/MCAM Rabbit pAb (A13927) at 1:500 dilution. Secondary antibody: HRP Goat Anti-Rabbit IgG (H+L) (AS014) at 1:10000 dilution. Lysates/proteins: 25µg per lane. Blocking buffer: 3% nonfat dry milk in TBST. Detection: ECL Enhanced Kit (RM00021). Exposure time: 180s.



Immunohistochemistry analysis of paraffin-embedded human colon carcinoma using CD146/MCAM Rabbit pAb (A13927) at dilution of 1:20 (40x lens). Perform high pressure antigen retrieval with 10 mM citrate buffer pH 6.0 before commencing with IHC staining protocol.

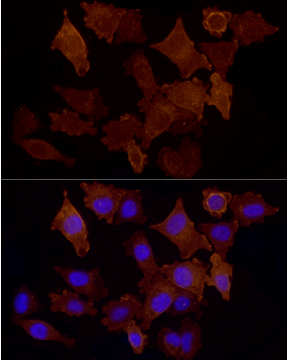


Immunohistochemistry analysis of paraffin-embedded human lung cancer using CD146/MCAM Rabbit pAb (A13927) at dilution of 1:20 (40x lens). Perform high pressure antigen retrieval with 10 mM citrate buffer pH 6.0 before commencing with IHC staining protocol.

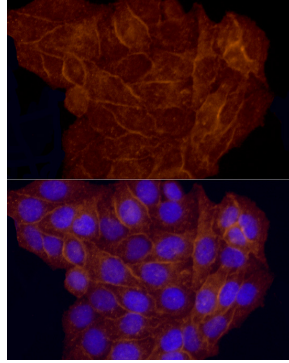


Immunohistochemistry analysis of paraffin-embedded human lung using CD146/MCAM Rabbit pAb (A13927) at dilution of 1:20 (40x lens). Perform high pressure antigen retrieval with 10 mM citrate buffer pH 6.0 before commencing with IHC staining protocol.

Validation Data



Immunofluorescence analysis of A375 cells using CD146/MCAM Rabbit pAb (A13927) at dilution of 1:50 (40x lens). Secondary antibody: Cy3 Goat Anti-Rabbit IgG (H+L) (AS007) at 1:500 dilution. Blue: DAPI for nuclear staining.



Immunofluorescence analysis of HeLa cells using CD146/MCAM Rabbit pAb (A13927) at dilution of 1:50 (40x lens). Secondary antibody: Cy3 Goat Anti-Rabbit IgG (H+L) (AS007) at 1:500 dilution. Blue: DAPI for nuclear staining.