

Sin3A Rabbit pAb

Catalog No.: A13928

Basic Information

Observed MW

147kDa

Calculated MW

145kDa

Category

Primary antibody

Applications

ELISA, WB

Cross-Reactivity

Human, Rat

Background

The protein encoded by this gene is a transcriptional regulatory protein. It contains paired amphipathic helix (PAH) domains, which are important for protein-protein interactions and may mediate repression by the Mad-Max complex.

Recommended Dilutions

WB 1:500 - 1:2000

Immunogen Information

Gene ID

25942

Swiss Prot

Q96ST3

Immunogen

Recombinant fusion protein containing a sequence corresponding to amino acids 1-120 of human Sin3A (NP_056292.1).

Synonyms

WITKOS; DEL15Q24; CHR15DELq24; Sin3A

Contact

☎ | 400-999-6126

✉ | cn.market@abclonal.com.cn

🌐 | www.abclonal.com.cn

Product Information

Source

Rabbit

Isotype

IgG

Purification

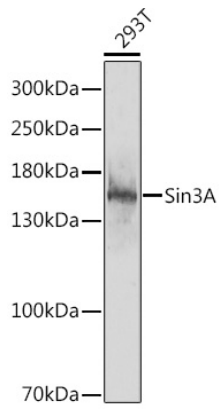
Affinity purification

Storage

Store at -20°C. Avoid freeze / thaw cycles.

Buffer: PBS with 0.02% sodium azide, 50% glycerol, pH 7.3.

Validation Data



Western blot analysis of extracts of 293T cells, using Sin3A antibody (A13928) at 1:1000 dilution.
Secondary antibody: HRP Goat Anti-Rabbit IgG (H+L) (AS014) at 1:10000 dilution.
Lysates/proteins: 25µg per lane.
Blocking buffer: 3% nonfat dry milk in TBST.
Detection: ECL Enhanced Kit (RM00021).
Exposure time: 90s.