

MESDC2 Rabbit pAb

Catalog No.: A13931

Basic Information

Observed MW

26kDa

Calculated MW

26kDa

Category

Primary antibody

Applications

ELISA, WB

Cross-Reactivity

Human, Mouse

Background

Predicted to enable low-density lipoprotein particle receptor binding activity. Involved in ossification and protein folding. Located in endoplasmic reticulum. Implicated in osteogenesis imperfecta type 20.

Recommended Dilutions

WB 1:500 - 1:2000

Immunogen Information

Gene ID

23184

Swiss Prot

Q14696

Immunogen

Recombinant fusion protein containing a sequence corresponding to amino acids 1-234 of human MESDC2 (NP_055969.1).

Synonyms

BOCA; OI20; MESDC2

Contact

☎ | 400-999-6126

✉ | cn.market@abclonal.com.cn

🌐 | www.abclonal.com.cn

Product Information

Source

Rabbit

Isotype

IgG

Purification

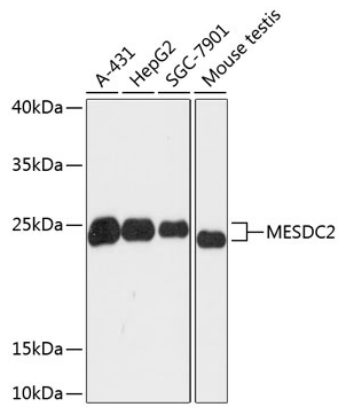
Affinity purification

Storage

Store at -20°C. Avoid freeze / thaw cycles.

Buffer: PBS with 0.01% thimerosal, 50% glycerol, pH7.3.

Validation Data



Western blot analysis of various lysates using MESDC2 Rabbit pAb (A13931) at 1:3000 dilution.
Secondary antibody: HRP Goat Anti-Rabbit IgG (H+L) (AS014) at 1:10000 dilution.
Lysates/proteins: 25 μ g per lane.
Blocking buffer: 3% nonfat dry milk in TBST.
Detection: ECL Basic Kit (RM00020).
Exposure time: 60s.