

# SMC4 Rabbit pAb

Catalog No.: A13933

## Basic Information

### Observed MW

147kDa

### Calculated MW

147kDa

### Category

Primary antibody

### Applications

WB, ELISA

### Cross-Reactivity

Human

## Background

This gene belongs to the 'structural maintenance of chromosomes' (SMC) gene family. Members of this gene family play a role in two changes in chromosome structure during mitotic segregation of chromosomes- chromosome condensation and sister chromatid cohesion. The protein encoded by this gene is likely a subunit of the 13S condensin complex, which is involved in chromosome condensation. A pseudogene related to this gene is located on chromosome 2.

## Recommended Dilutions

**WB** 1:500 - 1:2000

**ELISA** Recommended starting concentration is 1 µg/mL. Please optimize the concentration based on your specific assay requirements.

## Immunogen Information

### Gene ID

10051

### Swiss Prot

Q9NTJ3

### Immunogen

Synthetic peptide. This information is considered to be commercially sensitive.

### Synonyms

CAPC; CAP-C; SMC-4; SMC4L1; SMC4

## Contact

☎ | 400-999-6126

✉ | [cn.market@abclonal.com.cn](mailto:cn.market@abclonal.com.cn)

🌐 | [www.abclonal.com.cn](http://www.abclonal.com.cn)

## Product Information

### Source

Rabbit

### Isotype

IgG

### Purification

Affinity purification

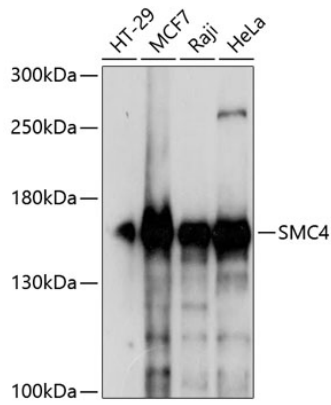
### Storage

Store at -20°C. Avoid freeze / thaw cycles.

Buffer: PBS with 0.01% thimerosal, 50% glycerol, pH7.3.

## Validation Data

---



Western blot analysis of various lysates using SMC4 Rabbit pAb (A13933) at 1:1000 dilution. Secondary antibody: HRP-conjugated Goat anti-Rabbit IgG (H+L) (AS014) at 1:10000 dilution. Lysates/proteins: 25µg per lane. Blocking buffer: 3% nonfat dry milk in TBST. Detection: ECL Enhanced Kit (RM00021). Exposure time: 3s.