

IFIT3 Rabbit pAb

Catalog No.: A14004

Basic Information

Observed MW

60kDa

Calculated MW

56kDa

Category

Primary antibody

Applications

ELISA, WB

Cross-Reactivity

Human, Mouse, Rat

Background

Predicted to enable RNA binding activity and identical protein binding activity. Acts upstream of or within cellular response to interferon-beta; response to bacterium; and response to stilbenoid. Predicted to be located in mitochondrion. Predicted to be active in cytosol. Is expressed in alimentary system; eye; face; and nervous system. Orthologous to human IFIT3 (interferon induced protein with tetratricopeptide repeats 3).

Recommended Dilutions

WB 1:500 - 1:2000

Immunogen Information

Gene ID

15959

Swiss Prot

O14879

Immunogen

A synthetic peptide corresponding to a sequence within amino acids 100-200 of mouse IFIT3 (NP_034631.1).

Synonyms

P49; Ifi49; IFIT3

Contact

☎ | 400-999-6126

✉ | cn.market@abclonal.com.cn

🌐 | www.abclonal.com.cn

Product Information

Source

Rabbit

Isotype

IgG

Purification

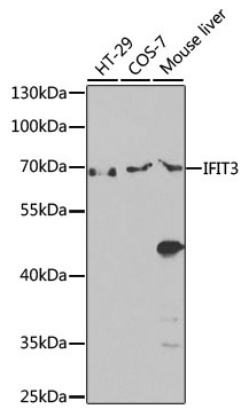
Affinity purification

Storage

Store at -20°C. Avoid freeze / thaw cycles.

Buffer: PBS with 0.02% sodium azide, 50% glycerol, pH 7.3.

Validation Data



Western blot analysis of extracts of various cell lines, using IFIT3 antibody (A14004) at 1:1000 dilution.
Secondary antibody: HRP Goat Anti-Rabbit IgG (H+L) (AS014) at 1:10000 dilution.
Lysates/proteins: 25µg per lane.
Blocking buffer: 3% nonfat dry milk in TBST.
Detection: ECL Enhanced Kit (RM00021).
Exposure time: 90s.