

IGF2 Rabbit pAb

Catalog No.: A14005

Basic Information

Observed MW

Calculated MW

20kDa

Category

Primary antibody

Applications

ELISA,IF/ICC

Cross-Reactivity

Human, Mouse, Rat

Background

This gene encodes a member of the insulin family of polypeptide growth factors, which are involved in development and growth. It is an imprinted gene, expressed only from the paternal allele, and epigenetic changes at this locus are associated with Wilms tumour, Beckwith-Wiedemann syndrome, rhabdomyosarcoma, and Silver-Russell syndrome. A read-through INS-IGF2 gene exists, whose 5' region overlaps the INS gene and the 3' region overlaps this gene. Alternatively spliced transcript variants encoding different isoforms have been found for this gene.

Recommended Dilutions

IF/ICC 1:50 - 1:200

Immunogen Information

Gene ID

3481

Swiss Prot

P01344

Immunogen

Recombinant fusion protein containing a sequence corresponding to amino acids 26-127 of human IGF2 (NP_000603.1).

Synonyms

GRDF; SRS3; IGF-II; PP9974; C11orf43; IGF2

Contact

 | 400-999-6126

 | cn.market@abclonal.com.cn

 | www.abclonal.com.cn

Product Information

Source

Rabbit

Isotype

IgG

Purification

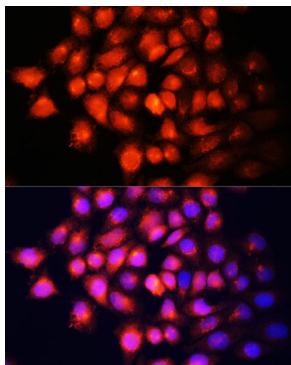
Affinity purification

Storage

Store at -20°C. Avoid freeze / thaw cycles.

Buffer: PBS with 0.01% thimerosal, 50% glycerol, pH7.3.

Validation Data



Immunofluorescence analysis of HeLa cells using IGF2 Polyclonal Antibody (A14005) at dilution of 1:100 (40x lens). Blue: DAPI for nuclear staining.