

KCNN3 Rabbit pAb

Catalog No.: A14012

Basic Information

Observed MW

50-85kDa

Calculated MW

81kDa

Category

Primary antibody

Applications

WB,ELISA

Cross-Reactivity

Human, Mouse, Rat

Background

Action potentials in vertebrate neurons are followed by an afterhyperpolarization (AHP) that may persist for several seconds and may have profound consequences for the firing pattern of the neuron. Each component of the AHP is kinetically distinct and is mediated by different calcium-activated potassium channels. This gene belongs to the KCNN family of potassium channels. It encodes an integral membrane protein that forms a voltage-independent calcium-activated channel, which is thought to regulate neuronal excitability by contributing to the slow component of synaptic AHP. This gene contains two CAG repeat regions in the coding sequence. It was thought that expansion of one or both of these repeats could lead to an increased susceptibility to schizophrenia or bipolar disorder, but studies indicate that this is probably not the case. Alternatively spliced transcript variants encoding different isoforms have been found for this gene.

Recommended Dilutions

WB 1:500 - 1:1000

ELISA Recommended starting concentration is 1 µg/mL. Please optimize the concentration based on your specific assay requirements.

Immunogen Information

Gene ID

3782

Swiss Prot

Q9UGI6

Immunogen

A synthetic peptide corresponding to a sequence within amino acids 631-731 of human KCNN3 (NP_002240.3).

Synonyms

SK3; ZLS3; hSK3; SKCA3; KCa2.3; KCNN3

Contact

☎ | 400-999-6126

✉ | cn.market@abclonal.com.cn

🌐 | www.abclonal.com.cn

Product Information

Source

Rabbit

Isotype

IgG

Purification

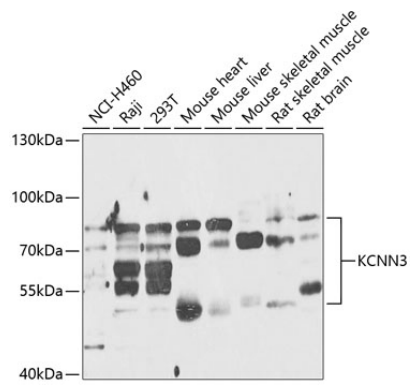
Affinity purification

Storage

Store at -20°C. Avoid freeze / thaw cycles.

Buffer: PBS with 0.09% Sodium azide, 50% glycerol, pH7.3.

Validation Data



Western blot analysis of various lysates using KCNN3 Rabbit pAb (A14012) at 1:1000 dilution. Secondary antibody: HRP-conjugated Goat anti-Rabbit IgG (H+L) (AS014) at 1:10000 dilution. Lysates/proteins: 25µg per lane. Blocking buffer: 3% nonfat dry milk in TBST. Detection: ECL Enhanced Kit (RM00021). Exposure time: 60s.