

S1PR3 Rabbit mAb

Catalog No.: A1404 **Recombinant** **1 Publications**

Basic Information

Observed MW

42kDa

Calculated MW

42kDa

Category

Primary antibody

Applications

ELISA, WB

Cross-Reactivity

Human, Mouse, Rat

CloneNo number

ARC1877

Background

This gene encodes a member of the EDG family of receptors, which are G protein-coupled receptors. This protein has been identified as a functional receptor for sphingosine 1-phosphate and likely contributes to the regulation of angiogenesis and vascular endothelial cell function.

Recommended Dilutions

WB 1:500 - 1:1000

Immunogen Information

Gene ID

1903

Swiss Prot

Q99500

Immunogen

A synthetic peptide corresponding to a sequence within amino acids 1-100 of human S1PR3 (Q99500).

Synonyms

EDG3; LPB3; S1P3; EDG-3; C9orf47; C9orf108; bA791O21.3; S1PR3

Contact

☎ | 400-999-6126

✉ | cn.market@abclonal.com.cn

🌐 | www.abclonal.com.cn

Product Information

Source

Rabbit

Isotype

IgG

Purification

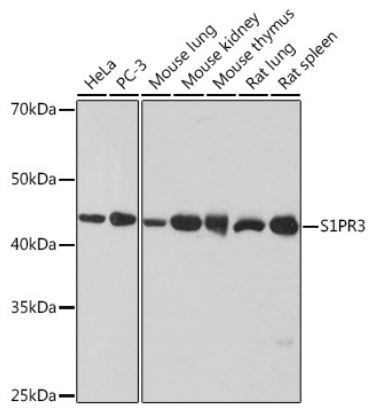
Affinity purification

Storage

Store at -20°C. Avoid freeze / thaw cycles.

Buffer: PBS with 0.02% sodium azide, 0.05% BSA, 50% glycerol, pH7.3.

Validation Data



Western blot analysis of extracts of various cell lines, using S1PR3 Rabbit mAb (A1404) at 1:1000 dilution.
Secondary antibody: HRP Goat Anti-Rabbit IgG (H+L) (AS014) at 1:10000 dilution.
Lysates/proteins: 25 μ g per lane.
Blocking buffer: 3% nonfat dry milk in TBST.
Detection: ECL Basic Kit (RM00020).
Exposure time: 10s.