

RPA3 Rabbit pAb

Catalog No.: A14058

Basic Information

Observed MW

19kDa

Calculated MW

14kDa

Category

Primary antibody

Applications

ELISA, WB, IF/ICC

Cross-Reactivity

Human, Mouse, Rat

Background

Enables damaged DNA binding activity and single-stranded DNA binding activity. Involved in DNA repair and DNA replication. Part of DNA replication factor A complex.

Recommended Dilutions

WB 1:500 - 1:2000

IF/ICC 1:50 - 1:200

Immunogen Information

Gene ID

6119

Swiss Prot

P35244

Immunogen

Recombinant fusion protein containing a sequence corresponding to amino acids 6-121 of human RPA3 (NP_002938.1).

Synonyms

REPA3; RP-A p14; RPA3

Contact

☎ | 400-999-6126

✉ | cn.market@abclonal.com.cn

🌐 | www.abclonal.com.cn

Product Information

Source

Rabbit

Isotype

IgG

Purification

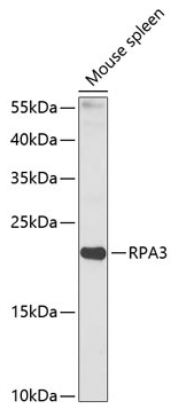
Affinity purification

Storage

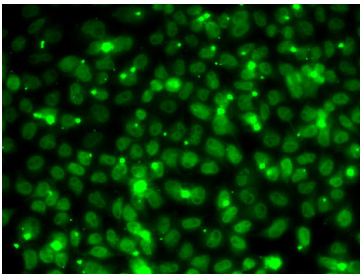
Store at -20°C. Avoid freeze / thaw cycles.

Buffer: PBS with 0.02% sodium azide, 50% glycerol, pH 7.3.

Validation Data



Western blot analysis of extracts of mouse spleen, using RPA3 antibody (A14058) at 1:1000 dilution.
Secondary antibody: HRP Goat Anti-Rabbit IgG (H+L) (AS014) at 1:10000 dilution.
Lysates/proteins: 25µg per lane.
Blocking buffer: 3% nonfat dry milk in TBST.
Detection: ECL Basic Kit (RM00020).
Exposure time: 60s.



Immunofluorescence analysis of MCF7 cells using RPA3 antibody (A14058).