

SLC22A2 Rabbit pAb

Catalog No.: A14061 **1 Publications**

Basic Information

Observed MW

95kDa

Calculated MW

63kDa

Category

Primary antibody

Applications

ELISA, WB

Cross-Reactivity

Mouse

Background

Polyspecific organic cation transporters in the liver, kidney, intestine, and other organs are critical for elimination of many endogenous small organic cations as well as a wide array of drugs and environmental toxins. This gene is one of three similar cation transporter genes located in a cluster on chromosome 6. The encoded protein contains twelve putative transmembrane domains and is a plasma integral membrane protein. It is found primarily in the kidney, where it may mediate the first step in cation reabsorption.

Recommended Dilutions

WB 1:500 - 1:2000

Immunogen Information

Gene ID

6582

Swiss Prot

O15244

Immunogen

Recombinant fusion protein containing a sequence corresponding to amino acids 44-140 of human SLC22A2 (NP_003049.2).

Synonyms

OCT2; SLC22A2

Contact

☎ | 400-999-6126

✉ | cn.market@abclonal.com.cn

🌐 | www.abclonal.com.cn

Product Information

Source

Rabbit

Isotype

IgG

Purification

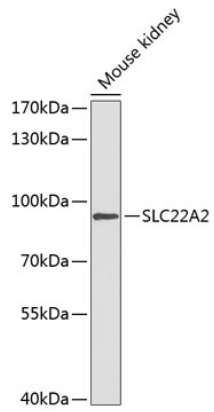
Affinity purification

Storage

Store at -20°C. Avoid freeze / thaw cycles.

Buffer: PBS with 0.02% sodium azide, 50% glycerol, pH7.3.

Validation Data



Western blot analysis of extracts of mouse kidney, using SLC22A2 antibody (A14061) at 1:1000 dilution.
Secondary antibody: HRP Goat Anti-Rabbit IgG (H+L) (AS014) at 1:10000 dilution.
Lysates/proteins: 25µg per lane.
Blocking buffer: 3% nonfat dry milk in TBST.
Detection: ECL Basic Kit (RM00020).
Exposure time: 90s.