

ALKBH1 Rabbit pAb

Catalog No.: A14079

Basic Information

Observed MW

44kDa

Calculated MW

44kDa

Category

Primary antibody

Applications

ELISA, WB, IF/ICC, IP

Cross-Reactivity

Human

Background

This gene encodes a homolog to the E. coli alkB gene product. The E. coli alkB protein is part of the adaptive response mechanism of DNA alkylation damage repair. It is involved in damage reversal by oxidative demethylation of 1-methyladenine and 3-methylcytosine.

Recommended Dilutions

WB 1:500 - 1:2000

IF/ICC 1:50 - 1:200

IP 0.5µg-4µg antibody for
200µg-400µg extracts of
whole cells

Immunogen Information

Gene ID

8846

Swiss Prot

Q13686

Immunogen

Recombinant fusion protein containing a sequence corresponding to amino acids 110-389 of human ALKBH1 (NP_006011.2).

Synonyms

ABH; ABH1; alkB; hABH; ALKBH; ALKBH1

Contact

☎ | 400-999-6126

✉ | cn.market@abclonal.com.cn

🌐 | www.abclonal.com.cn

Product Information

Source

Rabbit

Isotype

IgG

Purification

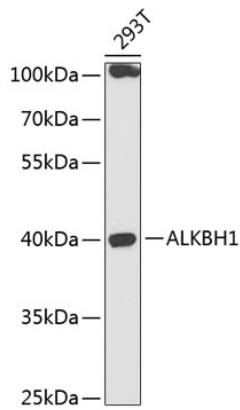
Affinity purification

Storage

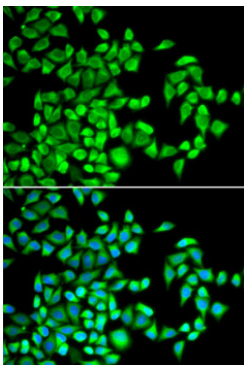
Store at -20°C. Avoid freeze / thaw cycles.

Buffer: PBS with 0.02% sodium azide, 50% glycerol, pH7.3.

Validation Data



Western blot analysis of lysates from 293T cells, using ALKBH1 Rabbit pAb (A14079) at 1:1000 dilution.
Secondary antibody: HRP Goat Anti-Rabbit IgG (H+L) (AS014) at 1:10000 dilution.
Lysates/proteins: 25µg per lane.
Blocking buffer: 3% nonfat dry milk in TBST.
Detection: ECL Enhanced Kit (RM00021).
Exposure time: 30s.



Immunofluorescence analysis of U2OS cells using ALKBH1 Rabbit pAb (A14079).
Secondary antibody: Cy3 Goat Anti-Rabbit IgG (H+L) (AS007) at 1:500 dilution. Blue: DAPI for nuclear staining.