

SETD5 Rabbit pAb

Catalog No.: A14140

Basic Information

Observed MW

Calculated MW

158kDa

Category

Primary antibody

Applications

ELISA,IF/ICC

Cross-Reactivity

Human

Background

This function of this gene has yet to be determined but based on sequence similarity to other SET domain proteins it may function as a histone methyltransferase. Mutations in this gene have been associated with an autosomal dominant form of intellectual disability. Alternative splicing results in multiple transcript variants encoding different isoforms.

Recommended Dilutions

IF/ICC 1:50 - 1:200

Immunogen Information

Gene ID

55209

Swiss Prot

Q9C0A6

Immunogen

Recombinant fusion protein containing a sequence corresponding to amino acids 520-740 of human SETD5 (NP_001073986.1).

Synonyms

MRD23; SETD5A; SETD5

Contact

☎ | 400-999-6126

✉ | cn.market@abclonal.com.cn

🌐 | www.abclonal.com.cn

Product Information

Source

Rabbit

Isotype

IgG

Purification

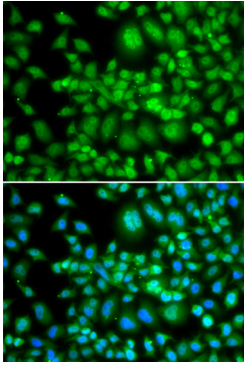
Affinity purification

Storage

Store at -20°C. Avoid freeze / thaw cycles.

Buffer: PBS with 0.02% sodium azide,50% glycerol,pH7.3.

Validation Data



Immunofluorescence analysis of MCF-7 cells using SETD5 antibody (A14140). Blue: DAPI for nuclear staining.