

HSP20/HSPB6 Rabbit pAb

Catalog No.: A14158

Basic Information

Observed MW

17kDa/24kDa

Calculated MW

17kDa

Category

Primary antibody

Applications

WB,ELISA

Cross-Reactivity

Human, Mouse, Rat

Background

This locus encodes a heat shock protein. The encoded protein likely plays a role in smooth muscle relaxation.

Recommended Dilutions

WB 1:500 - 1:2000

ELISA Recommended starting concentration is 1 µg/mL. Please optimize the concentration based on your specific assay requirements.

Immunogen Information

Gene ID

126393

Swiss Prot

O14558

Immunogen

Recombinant protein (or fragment). This information is considered to be commercially sensitive.

Synonyms

HEL55; Hsp20; PPP1R91; HSP20/HSPB6

Contact

☎ | 400-999-6126

✉ | cn.market@abclonal.com.cn

🌐 | www.abclonal.com.cn

Product Information

Source

Rabbit

Isotype

IgG

Purification

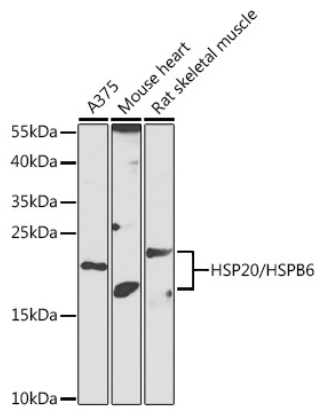
Affinity purification

Storage

Store at -20°C. Avoid freeze / thaw cycles.

Buffer: PBS with 0.02% sodium azide, 50% glycerol, pH7.3.

Validation Data



Western blot analysis of various lysates using HSP20/HSPB6 Rabbit pAb (A14158) at 1:1000 dilution.
Secondary antibody: HRP-conjugated Goat anti-Rabbit IgG (H+L) (AS014) at 1:10000 dilution.
Lysates/proteins: 25µg per lane.
Blocking buffer: 3% nonfat dry milk in TBST.
Detection: ECL Enhanced Kit (RM00021).
Exposure time: 90s.