

METTL2A Rabbit pAb

Catalog No.: A14166 **1 Publications**

Basic Information

Observed MW

Calculated MW
44kDa

Category
Primary antibody

Applications
ELISA,IF/ICC

Cross-Reactivity
Human, Mouse, Rat

Background

Enables tRNA (cytosine-3-)-methyltransferase activity. Involved in tRNA methylation.

Recommended Dilutions

IF/ICC 1:50 - 1:200

Immunogen Information

Gene ID 339175	Swiss Prot Q96IZ6
--------------------------	-----------------------------

Immunogen

Recombinant fusion protein containing a sequence corresponding to amino acids 139-378 of human METTL2A (NP_859076.3).

Synonyms

METTL2; METTL2A

Contact

 | 400-999-6126

 | cn.market@abclonal.com.cn

 | www.abclonal.com.cn

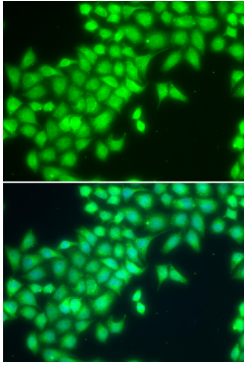
Product Information

Source Rabbit	Isotype IgG	Purification Affinity purification
-------------------------	-----------------------	--

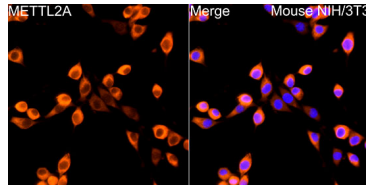
Storage

Store at -20°C. Avoid freeze / thaw cycles.
Buffer: PBS with 0.02% sodium azide,50% glycerol,pH7.3.

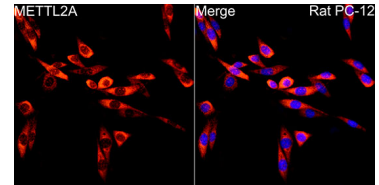
Validation Data



Immunofluorescence analysis of MCF-7 cells using METTL2A antibody (A14166). Blue: DAPI for nuclear staining.



Immunofluorescence analysis of NIH/3T3 cells using METTL2A Rabbit pAb (A14166) at dilution of 1:200 (40x lens). Blue: DAPI for nuclear staining.



Immunofluorescence analysis of PC-12 cells using METTL2A Rabbit pAb (A14166) at dilution of 1:200 (40x lens). Blue: DAPI for nuclear staining.