

# TMPRSS11A Rabbit pAb

Catalog No.: A14167

## Basic Information

### Observed MW

48kDa

### Calculated MW

47kDa

### Category

Primary antibody

### Applications

ELISA, WB

### Cross-Reactivity

Human, Mouse, Rat

## Background

Predicted to enable serine-type endopeptidase activity. Predicted to be involved in proteolysis. Predicted to be located in extracellular region. Predicted to be integral component of plasma membrane.

## Recommended Dilutions

WB 1:500 - 1:2000

## Immunogen Information

### Gene ID

339967

### Swiss Prot

Q6ZMR5

### Immunogen

Recombinant fusion protein containing a sequence corresponding to amino acids 300-421 of human TMPRSS11A (NP\_872412.3).

### Synonyms

HESP; ECRG1; HATL1; TMPRSS11A

## Contact

☎ | 400-999-6126

✉ | [cn.market@abclonal.com.cn](mailto:cn.market@abclonal.com.cn)

🌐 | [www.abclonal.com.cn](http://www.abclonal.com.cn)

## Product Information

### Source

Rabbit

### Isotype

IgG

### Purification

Affinity purification

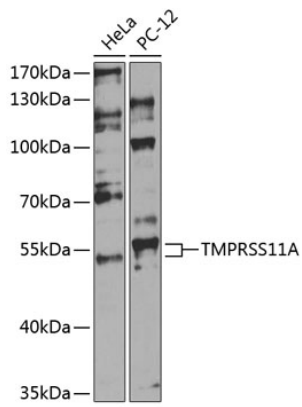
### Storage

Store at -20°C. Avoid freeze / thaw cycles.

Buffer: PBS with 0.02% sodium azide, 50% glycerol, pH7.3.

## Validation Data

---



Western blot analysis of extracts of various cell lines, using Tmprss11a antibody (A14167) at 1:1000 dilution.

Secondary antibody: HRP Goat Anti-Rabbit IgG (H+L) (AS014) at 1:10000 dilution.

Lysates/proteins: 25µg per lane.

Blocking buffer: 3% nonfat dry milk in TBST.

Detection: ECL Basic Kit (RM00020).

Exposure time: 60s.