

# IFI27 Rabbit pAb

Catalog No.: A14174 **2 Publications**

## Basic Information

### Observed MW

11kDa

### Calculated MW

12kDa

### Category

Primary antibody

### Applications

ELISA, WB

### Cross-Reactivity

Rat

## Background

Enables RNA polymerase II-specific DNA-binding transcription factor binding activity; identical protein binding activity; and lamin binding activity. Involved in several processes, including cellular protein metabolic process; defense response to other organism; and extrinsic apoptotic signaling pathway. Acts upstream of or within negative regulation of transcription by RNA polymerase II and regulation of protein export from nucleus. Located in mitochondrial membrane and nuclear inner membrane.

## Recommended Dilutions

WB 1:500 - 1:2000

## Immunogen Information

### Gene ID

3429

### Swiss Prot

P40305

### Immunogen

A synthetic peptide corresponding to a sequence within amino acids 1-100 of human IFI27 (NP\_005523.3).

### Synonyms

P27; ISG12; FAM14D; ISG12A; IFI27

## Contact

☎ | 400-999-6126

✉ | [cn.market@abclonal.com.cn](mailto:cn.market@abclonal.com.cn)

🌐 | [www.abclonal.com.cn](http://www.abclonal.com.cn)

## Product Information

### Source

Rabbit

### Isotype

IgG

### Purification

Affinity purification

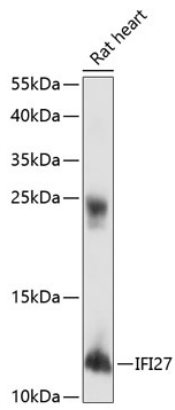
### Storage

Store at -20°C. Avoid freeze / thaw cycles.

Buffer: PBS with 0.01% thimerosal, 50% glycerol, pH7.3.

## Validation Data

---



Western blot analysis of lysates from rat heart, using IFI27 Rabbit pAb (A14174) at 1:1000 dilution.  
Secondary antibody: HRP Goat Anti-Rabbit IgG (H+L) (AS014) at 1:10000 dilution.  
Lysates/proteins: 25µg per lane.  
Blocking buffer: 3% nonfat dry milk in TBST.  
Detection: ECL Basic Kit (RM00020).  
Exposure time: 90s.