

# Haptoglobin (HP) Rabbit pAb

**Catalog No.: A14186**

## Basic Information

**Observed MW**

Refer to figures

**Calculated MW**

45kDa

**Category**

Primary antibody

**Applications**

ELISA,WB,IF/ICC

**Cross-Reactivity**

Human, Mouse

## Background

This gene encodes a preproprotein, which is processed to yield both alpha and beta chains, which subsequently combine as a tetramer to produce haptoglobin. Haptoglobin functions to bind free plasma hemoglobin, which allows degradative enzymes to gain access to the hemoglobin, while at the same time preventing loss of iron through the kidneys and protecting the kidneys from damage by hemoglobin. Mutations in this gene and/or its regulatory regions cause ahaptoglobinemia or hypohaptoglobinemia. This gene has also been linked to diabetic nephropathy, the incidence of coronary artery disease in type 1 diabetes, Crohn's disease, inflammatory disease behavior, primary sclerosing cholangitis, susceptibility to idiopathic Parkinson's disease, and a reduced incidence of Plasmodium falciparum malaria. The protein encoded also exhibits antimicrobial activity against bacteria. A similar duplicated gene is located next to this gene on chromosome 16. Multiple transcript variants encoding different isoforms have been found for this gene.

## Recommended Dilutions

**WB** 1:500 - 1:2000**IF/ICC** 1:50 - 1:200

## Immunogen Information

**Gene ID**

3240

**Swiss Prot**

P00738

**Immunogen**

Recombinant fusion protein containing a sequence corresponding to amino acids 123-347 of human Haptoglobin (Haptoglobin (HP)) (NP\_001119574.1).

**Synonyms**

BP; HPA1S; HP2ALPHA2; Haptoglobin (HP)

## Contact

 | 400-999-6126 | [cn.market@abclonal.com.cn](mailto:cn.market@abclonal.com.cn) | [www.abclonal.com.cn](http://www.abclonal.com.cn)

## Product Information

**Source**

Rabbit

**Isotype**

IgG

**Purification**

Affinity purification

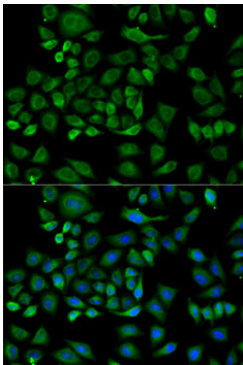
**Storage**

Store at -20°C. Avoid freeze / thaw cycles.

Buffer: PBS with 0.02% sodium azide,50% glycerol,pH7.3.

## Validation Data

---



Immunofluorescence analysis of HeLa cells using Haptoglobin (Haptoglobin (HP)) antibody (A14186). Blue: DAPI for nuclear staining.