

MSR1 Rabbit pAb

Catalog No.: A14187 **2 Publications**

Basic Information

Observed MW

60-90kDa

Calculated MW

50kDa

Category

Primary antibody

Applications

ELISA,WB

Cross-Reactivity

Human, Mouse, Rat

Background

This gene encodes the class A macrophage scavenger receptors, which include three different types (1, 2, 3) generated by alternative splicing of this gene. These receptors or isoforms are macrophage-specific trimeric integral membrane glycoproteins and have been implicated in many macrophage-associated physiological and pathological processes including atherosclerosis, Alzheimer's disease, and host defense. The isoforms type 1 and type 2 are functional receptors and are able to mediate the endocytosis of modified low density lipoproteins (LDLs). The isoform type 3 does not internalize modified LDL (acetyl-LDL) despite having the domain shown to mediate this function in the types 1 and 2 isoforms. It has an altered intracellular processing and is trapped within the endoplasmic reticulum, making it unable to perform endocytosis. The isoform type 3 can inhibit the function of isoforms type 1 and type 2 when co-expressed, indicating a dominant negative effect and suggesting a mechanism for regulation of scavenger receptor activity in macrophages.

Recommended Dilutions

WB 1:500 - 1:1000

Immunogen Information

Gene ID

4481

Swiss Prot

P21757

Immunogen

Recombinant fusion protein containing a sequence corresponding to amino acids 192-451 of human MSR1 (NP_619729.1).

Synonyms

SRA; SR-A; CD204; SR-AI; phSR1; phSR2; SCARA1; SR-AII; SR-AIII; MSR1

Contact

 | 400-999-6126 | cn.market@abclonal.com.cn | www.abclonal.com.cn

Product Information

Source

Rabbit

Isotype

IgG

Purification

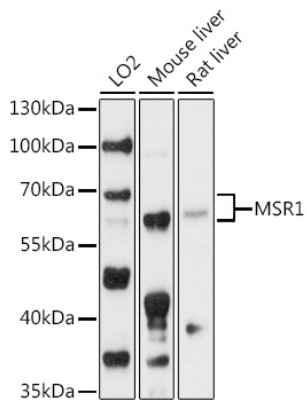
Affinity purification

Storage

Store at -20°C. Avoid freeze / thaw cycles.

Buffer: PBS with 0.02% sodium azide,50% glycerol,pH7.3.

Validation Data



Western blot analysis of extracts of various cell lines, using MSR1 antibody (A14187) at 1:1000 dilution.
Secondary antibody: HRP Goat Anti-Rabbit IgG (H+L) (AS014) at 1:10000 dilution.
Lysates/proteins: 25 μ g per lane.
Blocking buffer: 3% nonfat dry milk in TBST.
Detection: ECL Basic Kit (RM00020).
Exposure time: 90s.