

DNA-PKcs Rabbit pAb

Catalog No.: A1419 **4 Publications**

Basic Information

Observed MW

450kDa

Calculated MW

469kDa

Category

Primary antibody

Applications

WB,IHC-P,ELISA

Cross-Reactivity

Human

Background

This gene encodes the catalytic subunit of the DNA-dependent protein kinase (DNA-PK). It functions with the Ku70/Ku80 heterodimer protein in DNA double strand break repair and recombination. The protein encoded is a member of the PI3/PI4-kinase family.

Recommended Dilutions

WB 1:500 - 1:1000

IHC-P 1:50 - 1:200

ELISA Recommended starting concentration is 1 µg/mL. Please optimize the concentration based on your specific assay requirements.

Immunogen Information

Gene ID

5591

Swiss Prot

P78527

Immunogen

Recombinant fusion protein containing a sequence corresponding to amino acids 3993-4128 of human DNA-PKcs (NP_008835.5).

Synonyms

HYRC; p350; DNAPK; DNPk1; HYRC1; IMD26; XRCC7; DNAPKc; DNA-PKC; DNA-PKcs

Contact

 | 400-999-6126

 | cn.market@abclonal.com.cn

 | www.abclonal.com.cn

Product Information

Source

Rabbit

Isotype

IgG

Purification

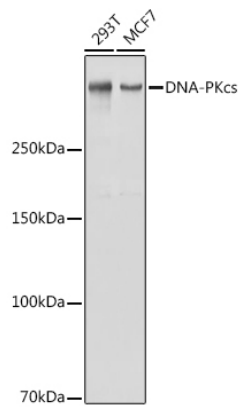
Affinity purification

Storage

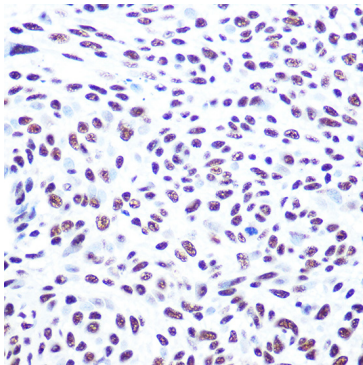
Store at -20°C. Avoid freeze / thaw cycles.

Buffer: PBS with 0.09% Sodium azide,50% glycerol,pH7.3.

Validation Data



Western blot analysis of various lysates using DNA-PKcs Rabbit pAb (A1419) at 1:1000 dilution.
Secondary antibody: HRP-conjugated Goat anti-Rabbit IgG (H+L) (AS014) at 1:10000 dilution.
Lysates/proteins: 25µg per lane.
Blocking buffer: 3% nonfat dry milk in TBST.
Detection: ECL Basic Kit (RM00020).
Exposure time: 1s.



Immunohistochemistry analysis of paraffin-embedded Human esophageal cancer using DNA-PKcs Rabbit pAb (A1419) at dilution of 1:100 (40x lens). High pressure antigen retrieval performed with 0.01M Citrate Bufferr (pH 6.0) prior to IHC staining.