

CSMD2 Rabbit pAb

Catalog No.: A14229 **1 Publications**

Basic Information

Observed MW

280kDa

Calculated MW

380kDa

Category

Primary antibody

Applications

ELISA, WB

Cross-Reactivity

Human, Mouse, Rat

Background

The protein encoded by this gene is thought to be involved in the control of complement cascade of the immune system. Defects in this gene have been associated with schizophrenia. This gene may act as a tumor suppressor for colorectal cancer.

Recommended Dilutions

WB 1:500 - 1:2000

Immunogen Information

Gene ID

114784

Swiss Prot

Q7Z408

Immunogen

A synthetic peptide corresponding to a sequence within amino acids 2050-2150 of human CSMD2 (NP_443128.2).

Synonyms

dj947L8.1; dj1007G16.1; dj1007G16.2; CSMD2

Contact

 | 400-999-6126

 | cn.market@abclonal.com.cn

 | www.abclonal.com.cn

Product Information

Source

Rabbit

Isotype

IgG

Purification

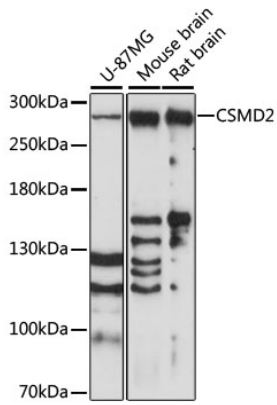
Affinity purification

Storage

Store at -20°C. Avoid freeze / thaw cycles.

Buffer: PBS with 0.01% thimerosal, 50% glycerol, pH7.3.

Validation Data



Western blot analysis of various lysates using CSMD2 Rabbit pAb (A14229) at 1:1000 dilution.
Secondary antibody: HRP Goat Anti-Rabbit IgG (H+L) (AS014) at 1:10000 dilution.
Lysates/proteins: 25µg per lane.
Blocking buffer: 3% nonfat dry milk in TBST.
Detection: ECL Basic Kit (RM00020).
Exposure time: 90s.