

CREBBP Rabbit pAb

Catalog No.: A14237 **2 Publications**

Basic Information

Observed MW

300kDa

Calculated MW

265kDa

Category

Primary antibody

Applications

ELISA, WB

Cross-Reactivity

Mouse, Rat

Background

Enables several functions, including DNA-binding transcription factor binding activity; TFIIB-class transcription factor binding activity; and disordered domain specific binding activity. Involved in several processes, including cellular response to virus; face morphogenesis; and negative regulation of interferon-beta production. Acts upstream of or within cellular response to hepatocyte growth factor stimulus; germ-line stem cell population maintenance; and regulation of gene expression. Located in chromatin and nucleus. Part of RNA polymerase II transcription regulator complex; histone acetyltransferase complex; and outer kinetochore. Is expressed in several structures, including alimentary system; embryo ectoderm; genitourinary system; heart; and skin. Used to study Rubinstein-Taybi syndrome; acute myeloid leukemia; autism spectrum disorder; and myelodysplastic syndrome. Human ortholog(s) of this gene implicated in Rubinstein-Taybi syndrome; acute lymphoblastic leukemia; and acute myeloid leukemia. Orthologous to human CREBBP (CREB binding protein).

Recommended Dilutions

WB 1:500 - 1:2000

Immunogen Information

Gene ID

12914

Swiss Prot

P45481

Immunogen

Recombinant fusion protein containing a sequence corresponding to amino acids 1-445 of mouse CREBBP (NP_001020603.1).

Synonyms

CBP; KAT3A; CBP/p300; p300/CBP; CREBBP

Contact

☎ | 400-999-6126

✉ | cn.market@abclonal.com.cn

🌐 | www.abclonal.com.cn

Product Information

Source

Rabbit

Isotype

IgG

Purification

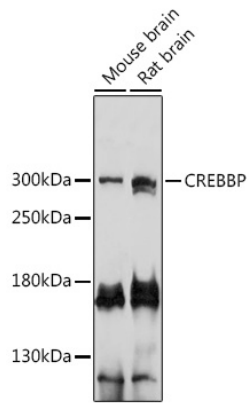
Affinity purification

Storage

Store at -20°C. Avoid freeze / thaw cycles.

Buffer: PBS with 0.02% sodium azide, 50% glycerol, pH7.3.

Validation Data



Western blot analysis of extracts of various cell lines, using CREBBP antibody (A14237) at 1:3000 dilution.
Secondary antibody: HRP Goat Anti-Rabbit IgG (H+L) (AS014) at 1:10000 dilution.
Lysates/proteins: 25 μ g per lane.
Blocking buffer: 3% nonfat dry milk in TBST.
Detection: ECL Enhanced Kit (RM00021).
Exposure time: 10s.