

PP2A-B56 β /PR61 β /PPP2R5B Rabbit pAb

Catalog No.: A14252

Basic Information

Observed MW

57kDa

Calculated MW

57kDa

Category

Primary antibody

Applications

ELISA, WB

Cross-Reactivity

Human

Background

The product of this gene belongs to the phosphatase 2A regulatory subunit B family. Protein phosphatase 2A is one of the four major Ser/Thr phosphatases, and it is implicated in the negative control of cell growth and division. It consists of a common heteromeric core enzyme, which is composed of a catalytic subunit and a constant regulatory subunit, that associates with a variety of regulatory subunits. The B regulatory subunit might modulate substrate selectivity and catalytic activity. This gene encodes a beta isoform of the regulatory subunit B56 subfamily.

Recommended Dilutions

WB 1:500 - 1:2000

Immunogen Information

Gene ID

5526

Swiss Prot

Q15173

Immunogen

Recombinant fusion protein containing a sequence corresponding to amino acids 1-130 of human PP2A-B56 β /PR61 β /PP2A-B56 β /PR61 β /PPP2R5B (NP_006235.1).

Synonyms

B56B; PR61B; B56beta; PP2A-B56 β /PR61 β /PPP2R5B

Contact

☎ | 400-999-6126

✉ | cn.market@abclonal.com.cn

🌐 | www.abclonal.com.cn

Product Information

Source

Rabbit

Isotype

IgG

Purification

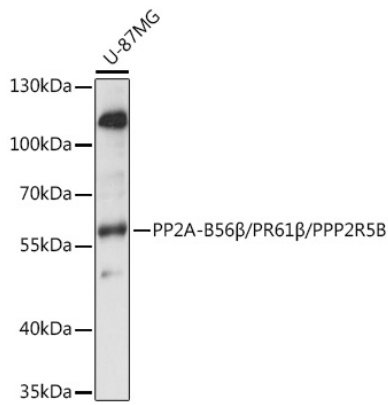
Affinity purification

Storage

Store at -20°C. Avoid freeze / thaw cycles.

Buffer: PBS with 0.01% thimerosal, 50% glycerol, pH7.3.

Validation Data



Western blot analysis of lysates from U-87MG cells, using PP2A-B56β/PR61β/PPP2R5B Rabbit pAb (A14252) at 1:1000 dilution.

Secondary antibody: HRP Goat Anti-Rabbit IgG (H+L) (AS014) at 1:10000 dilution.

Lysates/proteins: 25µg per lane.

Blocking buffer: 3% nonfat dry milk in TBST.

Detection: ECL Basic Kit (RM00020).

Exposure time: 1s.