

CHD1L Rabbit pAb

Catalog No.: A14264

Basic Information

Observed MW

101kDa

Calculated MW

101kDa

Category

Primary antibody

Applications

ELISA, WB

Cross-Reactivity

Mouse

Background

This gene encodes a DNA helicase protein involved in DNA repair. The protein converts ATP to add poly(ADP-ribose) as it regulates chromatin relaxation following DNA damage. Overexpression of this gene has been linked to several types of cancers.

Recommended Dilutions

WB 1:500 - 1:2000

Immunogen Information

Gene ID

9557

Swiss Prot

Q86WJ1

Immunogen

Recombinant fusion protein containing a sequence corresponding to amino acids 320-570 of human CHD1L (NP_001243267.1).

Synonyms

ALC1; CHDL; CHD1L

Contact

 | 400-999-6126

 | cn.market@abclonal.com.cn

 | www.abclonal.com.cn

Product Information

Source

Rabbit

Isotype

IgG

Purification

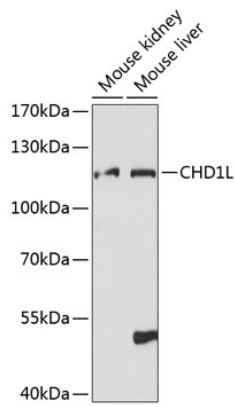
Affinity purification

Storage

Store at -20°C. Avoid freeze / thaw cycles.

Buffer: PBS with 0.01% thimerosal, 50% glycerol, pH7.3.

Validation Data



Western blot analysis of various lysates using CHD1L Rabbit pAb (A14264) at 1:1000 dilution.
Secondary antibody: HRP Goat Anti-Rabbit IgG (H+L) (AS014) at 1:10000 dilution.
Lysates/proteins: 25 μ g per lane.
Blocking buffer: 3% nonfat dry milk in TBST.
Detection: ECL Basic Kit (RM00020).
Exposure time: 90s.