

CNTN6 Rabbit pAb

Catalog No.: A14275

Basic Information

Observed MW

114kDa

Calculated MW

114kDa

Category

Primary antibody

Applications

ELISA, WB

Cross-Reactivity

Human

Background

The protein encoded by this gene is a member of the immunoglobulin superfamily. It is a glycosylphosphatidylinositol (GPI)-anchored neuronal membrane protein that functions as a cell adhesion molecule. It may play a role in the formation of axon connections in the developing nervous system. Alternative splicing results in multiple transcript variants.

Recommended Dilutions

WB 1:500 - 1:1000

Immunogen Information

Gene ID

27255

Swiss Prot

Q9UQ52

Immunogen

Recombinant fusion protein containing a sequence corresponding to amino acids 20-110 of human CNTN6 (NP_055276.1).

Synonyms

NB3; CNTN6

Contact

 | 400-999-6126

 | cn.market@abclonal.com.cn

 | www.abclonal.com.cn

Product Information

Source

Rabbit

Isotype

IgG

Purification

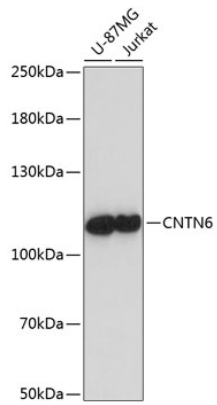
Affinity purification

Storage

Store at -20°C. Avoid freeze / thaw cycles.

Buffer: PBS with 0.01% thimerosal, 50% glycerol, pH7.3.

Validation Data



Western blot analysis of various lysates using CNTN6 Rabbit pAb (A14275) at 1:1000 dilution.
Secondary antibody: HRP Goat Anti-Rabbit IgG (H+L) (AS014) at 1:10000 dilution.
Lysates/proteins: 25µg per lane.
Blocking buffer: 3% nonfat dry milk in TBST.
Detection: ECL Enhanced Kit (RM00021).
Exposure time: 60s.