

MRPS2 Rabbit pAb

Catalog No.: A14279

Basic Information

Observed MW

33kDa

Calculated MW

33kDa

Category

Primary antibody

Applications

ELISA, WB, IHC-P

Cross-Reactivity

Mouse

Background

Mammalian mitochondrial ribosomal proteins are encoded by nuclear genes and help in protein synthesis within the mitochondrion. Mitochondrial ribosomes (mitoribosomes) consist of a small 28S subunit and a large 39S subunit. They have an estimated 75% protein to rRNA composition compared to prokaryotic ribosomes, where this ratio is reversed. Another difference between mammalian mitoribosomes and prokaryotic ribosomes is that the latter contain a 5S rRNA. Among different species, the proteins comprising the mitoribosome differ greatly in sequence, and sometimes in biochemical properties, which prevents easy recognition by sequence homology. This gene encodes a 28S subunit protein that belongs to the ribosomal protein S2 family. Alternatively spliced transcript variants have been observed for this gene.

Recommended Dilutions

WB 1:500 - 1:2000**IHC-P** 1:100 - 1:200

Immunogen Information

Gene ID

51116

Swiss Prot

Q9Y399

Immunogen

Recombinant fusion protein containing a sequence corresponding to amino acids 1-296 of human MRPS2 (NP_057118.1).

Synonyms

S2mt; CGI-91; MRP-S2; COXPD36; MRPS2

Contact

 | 400-999-6126 | cn.market@abclonal.com.cn | www.abclonal.com.cn

Product Information

Source

Rabbit

Isotype

IgG

Purification

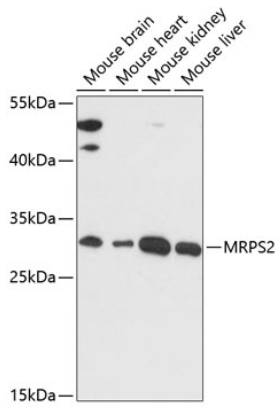
Affinity purification

Storage

Store at -20°C. Avoid freeze / thaw cycles.

Buffer: PBS with 0.01% thimerosal, 50% glycerol, pH 7.3.

Validation Data



Western blot analysis of various lysates using MRPS2 Rabbit pAb (A14279) at 1:3000 dilution.
Secondary antibody: HRP Goat Anti-Rabbit IgG (H+L) (AS014) at 1:10000 dilution.
Lysates/proteins: 25µg per lane.
Blocking buffer: 3% nonfat dry milk in TBST.
Detection: ECL Basic Kit (RM00020).
Exposure time: 90s.