

ZFR Rabbit pAb

Catalog No.: A14281

Basic Information

Observed MW

150kDa

Calculated MW

117kDa

Category

Primary antibody

Applications

WB, ELISA

Cross-Reactivity

Human, Mouse, Rat

Background

This gene encodes an RNA-binding protein characterized by its DZF (domain associated with zinc fingers) domain. The encoded protein may play a role in the nucleocytoplasmic shuttling of another RNA-binding protein, Staufin homolog 2, in neurons. Expression of this gene is regulated through alternative polyadenylation that mediates differential microRNA targeting. Elevated expression of this gene has been observed in human patients with pancreatic cancer and knockdown of this gene may result in reduced viability and invasion of pancreatic cancer cells.

Recommended Dilutions

WB 1:500 - 1:2000

ELISA Recommended starting concentration is 1 µg/mL. Please optimize the concentration based on your specific assay requirements.

Immunogen Information

Gene ID

51663

Swiss Prot

Q96KR1

Immunogen

Recombinant protein (or fragment). This information is considered to be commercially sensitive.

Synonyms

ZFR1; SPG71; ZFR

Contact

☎ | 400-999-6126

✉ | cn.market@abclonal.com.cn

🌐 | www.abclonal.com.cn

Product Information

Source

Rabbit

Isotype

IgG

Purification

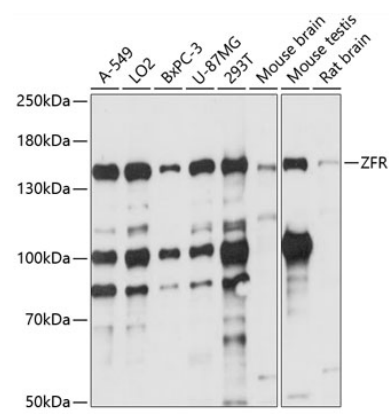
Affinity purification

Storage

Store at -20°C. Avoid freeze / thaw cycles.

Buffer: PBS with 0.01% thimerosal, 50% glycerol, pH7.3.

Validation Data



Western blot analysis of various lysates using ZFR Rabbit pAb (A14281) at 1:1000 dilution.
Secondary antibody: HRP-conjugated Goat anti-Rabbit IgG (H+L) (AS014) at 1:10000 dilution.
Lysates/proteins: 25µg per lane.
Blocking buffer: 3% nonfat dry milk in TBST.
Detection: ECL Basic Kit (RM00020).
Exposure time: 15s.