

COMTD1 Rabbit pAb

Catalog No.: A14300

Basic Information

Observed MW

29kDa

Calculated MW

29kDa

Category

Primary antibody

Applications

ELISA, WB

Cross-Reactivity

Human, Mouse, Rat

Background

Predicted to enable S-adenosylmethionine-dependent methyltransferase activity. Predicted to be involved in methylation. Predicted to be integral component of membrane.

Recommended Dilutions

WB 1:500 - 1:2000

Immunogen Information

Gene ID

118881

Swiss Prot

Q86VU5

Immunogen

Recombinant fusion protein containing a sequence corresponding to amino acids 33-262 of human COMTD1 (NP_653190.2).

Synonyms

COMTD1

Contact

☎ | 400-999-6126

✉ | cn.market@abclonal.com.cn

🌐 | www.abclonal.com.cn

Product Information

Source

Rabbit

Isotype

IgG

Purification

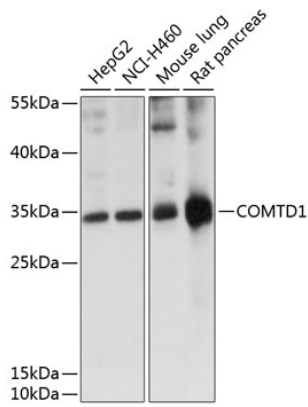
Affinity purification

Storage

Store at -20°C. Avoid freeze / thaw cycles.

Buffer: PBS with 0.01% thimerosal, 50% glycerol, pH7.3.

Validation Data



Western blot analysis of various lysates using COMTD1 Rabbit pAb (A14300) at 1:1000 dilution.
Secondary antibody: HRP Goat Anti-Rabbit IgG (H+L) (AS014) at 1:10000 dilution.
Lysates/proteins: 25µg per lane.
Blocking buffer: 3% nonfat dry milk in TBST.
Detection: ECL Basic Kit (RM00020).
Exposure time: 15s.