

PODN Rabbit pAb

Catalog No.: A14309

Basic Information

Observed MW

69kDa

Calculated MW

69kDa

Category

Primary antibody

Applications

WB, ELISA

Cross-Reactivity

Human, Mouse

Background

The protein encoded by this gene is a member of the small leucine-rich repeat protein family and contains an amino terminal CX3CXCX7C cysteine-rich cluster followed by a leucine-rich repeat domain. Studies suggest that this protein could function to inhibit smooth muscle cell proliferation and migration following arterial injury.

Recommended Dilutions

WB 1:500 - 1:2000

ELISA Recommended starting concentration is 1 µg/mL. Please optimize the concentration based on your specific assay requirements.

Immunogen Information

Gene ID

127435

Swiss Prot

Q7Z5L7

Immunogen

Recombinant protein (or fragment). This information is considered to be commercially sensitive.

Synonyms

PCAN; SLRR5A; PODN

Contact

☎ | 400-999-6126

✉ | cn.market@abclonal.com.cn

🌐 | www.abclonal.com.cn

Product Information

Source

Rabbit

Isotype

IgG

Purification

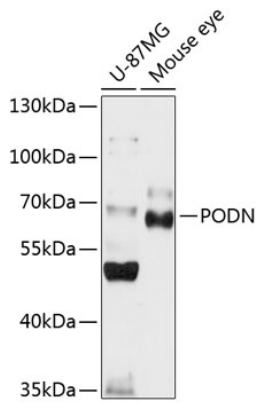
Affinity purification

Storage

Store at -20°C. Avoid freeze / thaw cycles.

Buffer: PBS with 0.02% sodium azide, 50% glycerol, pH 7.3.

Validation Data



Western blot analysis of various lysates using PODN Rabbit pAb (A14309) at 1:1000 dilution.
Secondary antibody: HRP-conjugated Goat anti-Rabbit IgG (H+L) (AS014) at 1:10000 dilution.
Lysates/proteins: 25 μ g per lane.
Blocking buffer: 3% nonfat dry milk in TBST.
Detection: ECL Basic Kit (RM00020).
Exposure time: 10s.