

# PRSS12 Rabbit pAb

Catalog No.: A14319

## Basic Information

### Observed MW

97kDa

### Calculated MW

97kDa

### Category

Primary antibody

### Applications

WB,ELISA

### Cross-Reactivity

Mouse, Rat

## Background

This gene encodes a member of the trypsin family of serine proteases and contains a signal peptide, a proline-rich region, a Kringle domain, four scavenger receptor cysteine-rich domains, and a trypsin-like serine protease domain. The protein, sometimes referred to as neurotrypsin or motopsin, is secreted from neuronal cells and localizes to the synaptic cleft. Studies in mice show that this protein cleaves a protein, agrin, that is important for the formation and maintenance of excitatory synapses. Defects in this gene cause a form of autosomal recessive cognitive impairment (MRT1).

## Recommended Dilutions

**WB** 1:500 - 1:2000

**ELISA** Recommended starting concentration is 1 µg/mL. Please optimize the concentration based on your specific assay requirements.

## Immunogen Information

### Gene ID

8492

### Swiss Prot

P56730

### Immunogen

Recombinant protein (or fragment). This information is considered to be commercially sensitive.

### Synonyms

MRT1; BSSP3; BSSP-3; PRSS12

## Contact

☎ | 400-999-6126

✉ | [cn.market@abclonal.com.cn](mailto:cn.market@abclonal.com.cn)

🌐 | [www.abclonal.com.cn](http://www.abclonal.com.cn)

## Product Information

### Source

Rabbit

### Isotype

IgG

### Purification

Affinity purification

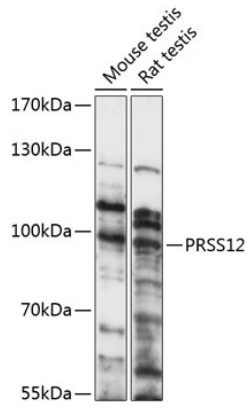
### Storage

Store at -20°C. Avoid freeze / thaw cycles.

Buffer: PBS with 0.01% thimerosal, 50% glycerol, pH 7.3.

## Validation Data

---



Western blot analysis of various lysates using PRSS12 Rabbit pAb (A14319) at 1:1000 dilution.  
Secondary antibody: HRP-conjugated Goat anti-Rabbit IgG (H+L) (AS014) at 1:10000 dilution.  
Lysates/proteins: 25µg per lane.  
Blocking buffer: 3% nonfat dry milk in TBST.  
Detection: ECL Basic Kit (RM00020).  
Exposure time: 30s.