

RAB12 Rabbit pAb

Catalog No.: A14320

Basic Information

Observed MW

36kDa

Calculated MW

27kDa

Category

Primary antibody

Applications

ELISA, WB

Cross-Reactivity

Human, Mouse

Background

Enables GDP binding activity. Predicted to be involved in several processes, including cellular response to insulin stimulus; endosome to lysosome transport; and secretion by cell. Predicted to act upstream of or within cellular response to interferon-gamma. Predicted to be located in lysosome; phagocytic vesicle; and recycling endosome membrane. Predicted to be active in Golgi apparatus; cytoplasmic vesicle; and plasma membrane.

Recommended Dilutions

WB 1:500 - 1:2000

Immunogen Information

Gene ID

201475

Swiss Prot

Q6IQ22

Immunogen

Recombinant fusion protein containing a sequence corresponding to amino acids 1-70 of human RAB12 (NP_001020471.2).

Synonyms

RAB12

Contact

☎ | 400-999-6126

✉ | cn.market@abclonal.com.cn

🌐 | www.abclonal.com.cn

Product Information

Source

Rabbit

Isotype

IgG

Purification

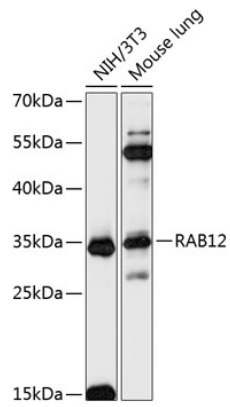
Affinity purification

Storage

Store at -20°C. Avoid freeze / thaw cycles.

Buffer: PBS with 0.01% thimerosal, 50% glycerol, pH7.3.

Validation Data



Western blot analysis of various lysates using RAB12 Rabbit pAb (A14320) at 1:3000 dilution.
Secondary antibody: HRP Goat Anti-Rabbit IgG (H+L) (AS014) at 1:10000 dilution.
Lysates/proteins: 25 μ g per lane.
Blocking buffer: 3% nonfat dry milk in TBST.
Detection: ECL Basic Kit (RM00020).
Exposure time: 60s.