

YPEL5 Rabbit pAb

Catalog No.: A14331

Basic Information

Observed MW

14kDa

Calculated MW

14kDa

Category

Primary antibody

Applications

ELISA,WB

Cross-Reactivity

Human, Mouse, Rat

Background

Predicted to enable metal ion binding activity. Predicted to be involved in cell population proliferation. Part of ubiquitin ligase complex.

Recommended Dilutions

WB 1:500 - 1:2000

Immunogen Information

Gene ID

51646

Swiss Prot

P62699

Immunogen

Recombinant fusion protein containing a sequence corresponding to amino acids 1-121 of human YPEL5 (NP_057145.1).

Synonyms

CGI-127; YPEL5

Contact

 | 400-999-6126

 | cn.market@abclonal.com.cn

 | www.abclonal.com.cn

Product Information

Source

Rabbit

Isotype

IgG

Purification

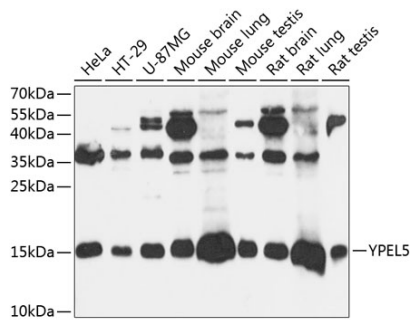
Affinity purification

Storage

Store at -20°C. Avoid freeze / thaw cycles.

Buffer: PBS with 0.01% thimerosal,50% glycerol,pH7.3.

Validation Data



Western blot analysis of various lysates using YPEL5 Rabbit pAb (A14331) at 1:3000 dilution.
Secondary antibody: HRP Goat Anti-Rabbit IgG (H+L) (AS014) at 1:10000 dilution.
Lysates/proteins: 25 μ g per lane.
Blocking buffer: 3% nonfat dry milk in TBST.
Detection: ECL Basic Kit (RM00020).
Exposure time: 90s.