

# MRI1 Rabbit pAb

Catalog No.: A14344

## Basic Information

### Observed MW

45kDa

### Calculated MW

39kDa

### Category

Primary antibody

### Applications

ELISA, WB

### Cross-Reactivity

Human, Mouse, Rat

## Background

This enzyme functions in the methionine salvage pathway by catalyzing the interconversion of methylthioribose-1-phosphate and methylthioribulose-1-phosphate. Elevated expression of the encoded protein is associated with metastatic melanoma and this protein promotes melanoma cell invasion independent of its enzymatic activity. Mutations in this gene may be associated with vanishing white matter disease (VMWD).

## Recommended Dilutions

WB 1:500 - 1:2000

## Immunogen Information

### Gene ID

84245

### Swiss Prot

Q9BV20

### Immunogen

Recombinant fusion protein containing a sequence corresponding to amino acids 1-369 of human MRI1 (NP\_001026897.1).

### Synonyms

M1Pi; MRDI; MTNA; Ypr118w; MRI1

## Contact

☎ | 400-999-6126

✉ | [cn.market@abclonal.com.cn](mailto:cn.market@abclonal.com.cn)

🌐 | [www.abclonal.com.cn](http://www.abclonal.com.cn)

## Product Information

### Source

Rabbit

### Isotype

IgG

### Purification

Affinity purification

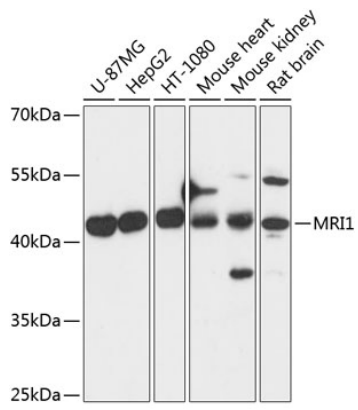
### Storage

Store at -20°C. Avoid freeze / thaw cycles.

Buffer: PBS with 0.01% thimerosal, 50% glycerol, pH7.3.

## Validation Data

---



Western blot analysis of various lysates using MRI1 Rabbit pAb (A14344) at 1:3000 dilution.  
Secondary antibody: HRP Goat Anti-Rabbit IgG (H+L) (AS014) at 1:10000 dilution.  
Lysates/proteins: 25µg per lane.  
Blocking buffer: 3% nonfat dry milk in TBST.  
Detection: ECL Basic Kit (RM00020).  
Exposure time: 1s.