

RHBDD1 Rabbit pAb

Catalog No.: A14350

Basic Information

Observed MW

35kDa

Calculated MW

36kDa

Category

Primary antibody

Applications

ELISA, WB, IF/ICC

Cross-Reactivity

Human, Mouse, Rat

Background

Enables serine-type endopeptidase activity. Involved in several processes, including cellular response to unfolded protein; membrane protein proteolysis; and positive regulation of protein catabolic process. Located in endoplasmic reticulum.

Recommended Dilutions

WB 1:500 - 1:2000

IF/ICC 1:50 - 1:100

Immunogen Information

Gene ID

84236

Swiss Prot

Q8TEB9

Immunogen

Recombinant fusion protein containing a sequence corresponding to amino acids 206-315 of human RHBDD1 (NP_115652.2).

Synonyms

RRP4; RHBDL4; RHBDD1

Contact

☎ | 400-999-6126

✉ | cn.market@abclonal.com.cn

🌐 | www.abclonal.com.cn

Product Information

Source

Rabbit

Isotype

IgG

Purification

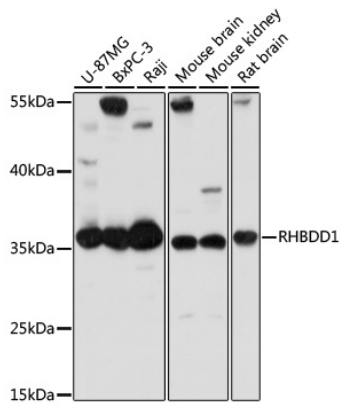
Affinity purification

Storage

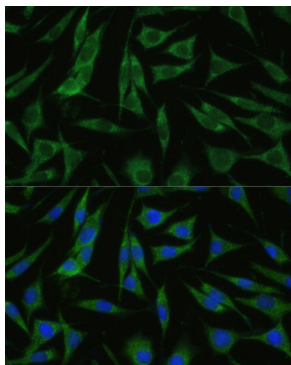
Store at -20°C. Avoid freeze / thaw cycles.

Buffer: PBS with 0.01% thimerosal, 50% glycerol, pH7.3.

Validation Data



Western blot analysis of various lysates using RHBDD1 Rabbit pAb (A14350) at 1:1000 dilution. Secondary antibody: HRP Goat Anti-Rabbit IgG (H+L) (AS014) at 1:10000 dilution. Lysates/proteins: 25µg per lane. Blocking buffer: 3% nonfat dry milk in TBST. Detection: ECL Basic Kit (RM00020). Exposure time: 10s.



Immunofluorescence analysis of L929 cells using RHBDD1 Rabbit pAb (A14350) at dilution of 1:100 (40x lens). Secondary antibody: Cy3 Goat Anti-Rabbit IgG (H+L) (AS007) at 1:500 dilution. Blue: DAPI for nuclear staining.