

C2CD5 Rabbit pAb

Catalog No.: A14357

Basic Information

Observed MW

110kDa

Calculated MW

110kDa

Category

Primary antibody

Applications

ELISA, WB

Cross-Reactivity

Human, Mouse, Rat

Background

Enables calcium ion binding activity and calcium-dependent phospholipid binding activity. Involved in cellular response to insulin stimulus; intracellular protein transmembrane transport; and positive regulation of transport. Located in several cellular components, including centriolar satellite; cytoplasmic vesicle membrane; and ruffle membrane.

Recommended Dilutions

WB 1:500 - 1:2000

Immunogen Information

Gene ID

9847

Swiss Prot

Q86YS7

Immunogen

Recombinant fusion protein containing a sequence corresponding to amino acids 732-1051 of human C2CD5 (NP_001273103.1).

Synonyms

CDP138; KIAA0528; C2CD5

Contact

☎ | 400-999-6126

✉ | cn.market@abclonal.com.cn

🌐 | www.abclonal.com.cn

Product Information

Source

Rabbit

Isotype

IgG

Purification

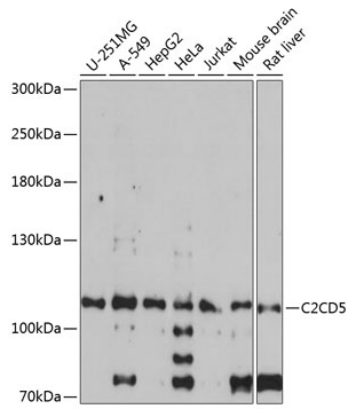
Affinity purification

Storage

Store at -20°C. Avoid freeze / thaw cycles.

Buffer: PBS with 0.01% thimerosal, 50% glycerol, pH7.3.

Validation Data



Western blot analysis of various lysates using C2CD5 Rabbit pAb (A14357) at 1:1000 dilution.
Secondary antibody: HRP Goat Anti-Rabbit IgG (H+L) (AS014) at 1:10000 dilution.
Lysates/proteins: 25µg per lane.
Blocking buffer: 3% nonfat dry milk in TBST.
Detection: ECL Basic Kit (RM00020).
Exposure time: 90s.