

CHMP7 Rabbit pAb

Catalog No.: A14360 **1 Publications**

Basic Information

Observed MW

60kDa

Calculated MW

51kDa

Category

Primary antibody

Applications

ELISA, WB

Cross-Reactivity

Human, Mouse, Rat

Background

Involved in several processes, including late endosome to vacuole transport; midbody abscission; and mitotic nuclear division. Located in cytosol; nuclear envelope; and nucleoplasm. Part of ESCRT III complex. Colocalizes with chromatin.

Recommended Dilutions

WB 1:500 - 1:2000

Immunogen Information

Gene ID

91782

Swiss Prot

Q8WUX9

Immunogen

Recombinant fusion protein containing a sequence corresponding to amino acids 230-453 of human CHMP7 (NP_689485.1).

Synonyms

CHMP7

Contact

 | 400-999-6126

 | cn.market@abclonal.com.cn

 | www.abclonal.com.cn

Product Information

Source

Rabbit

Isotype

IgG

Purification

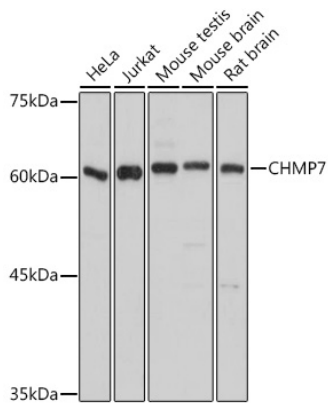
Affinity purification

Storage

Store at -20°C. Avoid freeze / thaw cycles.

Buffer: PBS with 0.01% thimerosal, 50% glycerol, pH7.3.

Validation Data



Western blot analysis of various lysates using CHMP7 Rabbit pAb (A14360) at 1:1000 dilution.
Secondary antibody: HRP Goat Anti-Rabbit IgG (H+L) (AS014) at 1:10000 dilution.
Lysates/proteins: 25 μ g per lane.
Blocking buffer: 3% nonfat dry milk in TBST.
Detection: ECL Basic Kit (RM00020).
Exposure time: 10s.