

ATP12A Rabbit pAb

Catalog No.: A14372

Basic Information

Observed MW

116kDa

Calculated MW

116kDa

Category

Primary antibody

Applications

WB, ELISA

Cross-Reactivity

Human

Background

The protein encoded by this gene belongs to the family of P-type cation transport ATPases. This gene encodes a catalytic subunit of the ouabain-sensitive H⁺/K⁺ -ATPase that catalyzes the hydrolysis of ATP coupled with the exchange of H⁽⁺⁾ and K⁽⁺⁾ ions across the plasma membrane. It is also responsible for potassium absorption in various tissues. Two transcript variants encoding different isoforms have been found for this gene.

Recommended Dilutions

WB 1:500 - 1:1000

ELISA Recommended starting concentration is 1 µg/mL. Please optimize the concentration based on your specific assay requirements.

Immunogen Information

Gene ID

479

Swiss Prot

P54707

Immunogen

Recombinant protein (or fragment). This information is considered to be commercially sensitive.

Synonyms

HK; ATP1A1; H-K-ATPase; ATP12A

Contact

☎ | 400-999-6126

✉ | cn.market@abclonal.com.cn

🌐 | www.abclonal.com.cn

Product Information

Source

Rabbit

Isotype

IgG

Purification

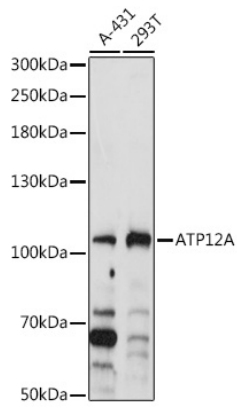
Affinity purification

Storage

Store at -20°C. Avoid freeze / thaw cycles.

Buffer: PBS with 0.01% thimerosal, 50% glycerol, pH 7.3.

Validation Data



Western blot analysis of various lysates using ATP12A Rabbit pAb (A14372) at 1:1000 dilution.
Secondary antibody: HRP-conjugated Goat anti-Rabbit IgG (H+L) (AS014) at 1:10000 dilution.
Lysates/proteins: 25µg per lane.
Blocking buffer: 3% nonfat dry milk in TBST.
Detection: ECL Basic Kit (RM00020).
Exposure time: 5s.