

# p38 MAPK Rabbit pAb

Catalog No.: A14401

109 Publications

## Basic Information

**Observed MW**

41kDa

**Calculated MW**

41kDa

**Category**

Primary antibody

**Applications**

WB, IHC-P, IF/ICC, IP, ELISA

**Cross-Reactivity**

Human, Mouse, Rat

## Background

The protein encoded by this gene is a member of the MAP kinase family. MAP kinases act as an integration point for multiple biochemical signals, and are involved in a wide variety of cellular processes such as proliferation, differentiation, transcription regulation and development. This kinase is activated by various environmental stresses and proinflammatory cytokines. The activation requires its phosphorylation by MAP kinase kinases (MKKs), or its autophosphorylation triggered by the interaction of MAP3K7IP1/TAB1 protein with this kinase. The substrates of this kinase include transcription regulator ATF2, MEF2C, and MAX, cell cycle regulator CDC25B, and tumor suppressor p53, which suggest the roles of this kinase in stress related transcription and cell cycle regulation, as well as in genotoxic stress response. Four alternatively spliced transcript variants of this gene encoding distinct isoforms have been reported.

## Recommended Dilutions

**WB** 1:500 - 1:1000**IHC-P** 1:50 - 1:200**IF/ICC** 1:50 - 1:100**IP** 0.5µg-4µg antibody for  
200µg-400µg extracts of  
whole cells**ELISA** Recommended starting  
concentration is 1 µg/mL.  
Please optimize the  
concentration based on  
your specific assay  
requirements.

## Immunogen Information

**Gene ID**

1432

**Swiss Prot**

Q16539

**Immunogen**

Recombinant protein (or fragment). This information is considered to be commercially sensitive.

**Synonyms**

RK; p38; CSBP; EXIP; Mxi2; CSBP1; CSBP2; CSPB1; PRKM14; PRKM15; SAPK2A; p38ALPHA; p38 MAPK

## Product Information

**Source**

Rabbit

**Isotype**

IgG

**Purification**

Affinity purification

**Storage**

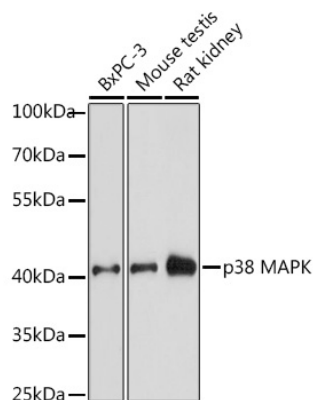
Store at -20°C. Avoid freeze / thaw cycles.

Buffer: PBS with 0.09% Sodium azide, 50% glycerol, pH7.3.

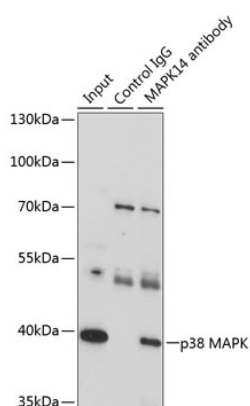
## Contact

 | 400-999-6126 | [cn.market@abclonal.com.cn](mailto:cn.market@abclonal.com.cn) | [www.abclonal.com.cn](http://www.abclonal.com.cn)

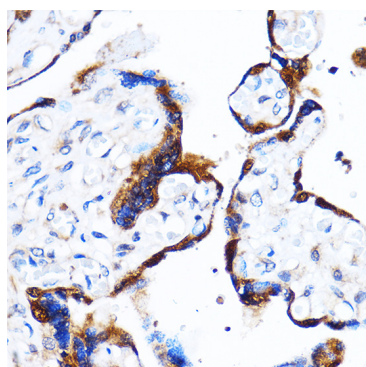
## Validation Data



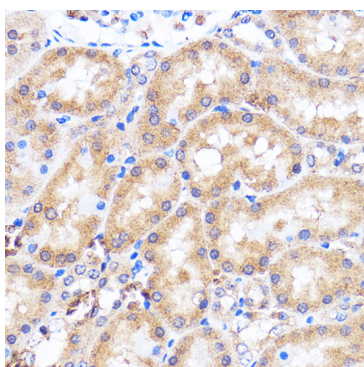
Western blot analysis of various lysates using p38 MAPK Rabbit pAb (A14401) at 1:1000 dilution. Secondary antibody: HRP-conjugated Goat anti-Rabbit IgG (H+L) (AS014) at 1:10000 dilution. Lysates/proteins: 25µg per lane. Blocking buffer: 3% nonfat dry milk in TBST. Detection: ECL Enhanced Kit (RM00021). Exposure time: 30s.



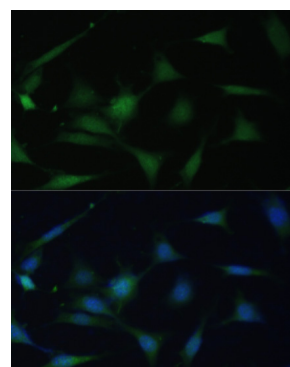
Immunoprecipitation analysis of 200 µg extracts of U-87MG cells, using 3 µg p38 MAPK antibody (A14401). Western blot was performed from the immunoprecipitate using p38 MAPK antibody (A14401) at a dilution of 1:1000.



Immunohistochemistry analysis of paraffin-embedded Human placenta using p38 MAPK Rabbit pAb (A14401) at dilution of 1:100 (40x lens). Microwave antigen retrieval performed with 0.01M PBS Buffer (pH 7.2) prior to IHC staining.



Immunohistochemistry analysis of paraffin-embedded Rat kidney using p38 MAPK Rabbit pAb (A14401) at dilution of 1:100 (40x lens). Microwave antigen retrieval performed with 0.01M PBS Buffer (pH 7.2) prior to IHC staining.



Immunofluorescence analysis of NIH-3T3 cells using p38 MAPK Rabbit pAb (A14401) at dilution of 1:100. Secondary antibody: Cy3-conjugated Goat anti-Rabbit IgG (H+L) (AS007) at 1:500 dilution. Blue: DAPI for nuclear staining.