

# G2E3 Rabbit pAb

Catalog No.: A14410

## Basic Information

### Observed MW

80kDa

### Calculated MW

81kDa

### Category

Primary antibody

### Applications

ELISA, WB

### Cross-Reactivity

Human, Mouse, Rat

## Background

Predicted to enable ubiquitin protein ligase activity. Predicted to be involved in apoptotic process and protein ubiquitination. Predicted to act upstream of or within blastocyst development; negative regulation of intrinsic apoptotic signaling pathway; and protein polyubiquitination. Located in Golgi apparatus and cytosol.

## Recommended Dilutions

WB 1:500 - 1:2000

## Immunogen Information

### Gene ID

55632

### Swiss Prot

Q7L622

### Immunogen

Recombinant fusion protein containing a sequence corresponding to amino acids 1-180 of human G2E3 (NP\_060239.2).

### Synonyms

PHF7B; KIAA1333; G2E3

## Contact

 | 400-999-6126

 | [cn.market@abclonal.com.cn](mailto:cn.market@abclonal.com.cn)

 | [www.abclonal.com.cn](http://www.abclonal.com.cn)

## Product Information

### Source

Rabbit

### Isotype

IgG

### Purification

Affinity purification

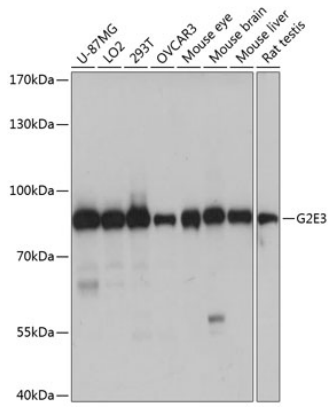
### Storage

Store at -20°C. Avoid freeze / thaw cycles.

Buffer: PBS with 0.01% thimerosal, 50% glycerol, pH 7.3.

## Validation Data

---



Western blot analysis of various lysates using G2E3 Rabbit pAb (A14410) at 1:1000 dilution.  
Secondary antibody: HRP Goat Anti-Rabbit IgG (H+L) (AS014) at 1:10000 dilution.  
Lysates/proteins: 25µg per lane.  
Blocking buffer: 3% nonfat dry milk in TBST.  
Detection: ECL Basic Kit (RM00020).  
Exposure time: 1s.