

OMA1 Rabbit pAb

Catalog No.: A14437 **2 Publications**

Basic Information

Observed MW

60kDa

Calculated MW

60kDa

Category

Primary antibody

Applications

ELISA, WB

Cross-Reactivity

Human, Mouse

Background

Enables metalloendopeptidase activity. Involved in several processes, including HRI-mediated signaling; proteolysis; and regulation of mitochondrion organization. Located in mitochondrial inner membrane.

Recommended Dilutions

WB 1:500 - 1:2000

Immunogen Information

Gene ID

115209

Swiss Prot

Q96E52

Immunogen

Recombinant fusion protein containing a sequence corresponding to amino acids 360-524 of human OMA1 (NP_660286.1).

Synonyms

DAB1; MPRP1; MPRP-1; YKR087C; ZMPOMA1; peptidase; 2010001009Rik; OMA1

Contact

 | 400-999-6126

 | cn.market@abclonal.com.cn

 | www.abclonal.com.cn

Product Information

Source

Rabbit

Isotype

IgG

Purification

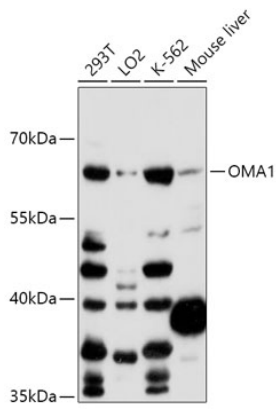
Affinity purification

Storage

Store at -20°C. Avoid freeze / thaw cycles.

Buffer: PBS with 0.01% thimerosal, 50% glycerol, pH7.3.

Validation Data



Western blot analysis of various lysates using OMA1 Rabbit pAb (A14437) at 1:1000 dilution.
Secondary antibody: HRP Goat Anti-Rabbit IgG (H+L) (AS014) at 1:10000 dilution.
Lysates/proteins: 25µg per lane.
Blocking buffer: 3% nonfat dry milk in TBST.
Detection: ECL Basic Kit (RM00020).
Exposure time: 60s.