

PPM1M Rabbit pAb

Catalog No.: A14446

Basic Information

Observed MW

30kDa

Calculated MW

51kDa

Category

Primary antibody

Applications

WB, ELISA

Cross-Reactivity

Human, Mouse

Background

Predicted to enable manganese ion binding activity and phosphoprotein phosphatase activity. Predicted to be involved in protein dephosphorylation. Predicted to be located in nucleus.

Recommended Dilutions

WB 1:500 - 1:2000

ELISA Recommended starting concentration is 1 µg/mL. Please optimize the concentration based on your specific assay requirements.

Immunogen Information

Gene ID

132160

Swiss Prot

Q96M16

Immunogen

Recombinant protein (or fragment). This information is considered to be commercially sensitive.

Synonyms

PP2CE; PP2Ceta; PP2C-eta; PPM1M

Contact

☎ | 400-999-6126

✉ | cn.market@abclonal.com.cn

🌐 | www.abclonal.com.cn

Product Information

Source

Rabbit

Isotype

IgG

Purification

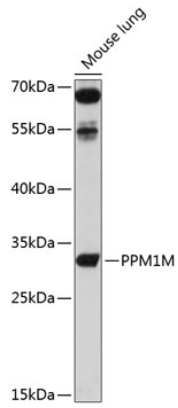
Affinity purification

Storage

Store at -20°C. Avoid freeze / thaw cycles.

Buffer: PBS with 0.02% sodium azide, 50% glycerol, pH 7.3.

Validation Data



Western blot analysis of lysates from mouse testis, using PPM1M Rabbit pAb (A14446) at 1:3000 dilution.
Secondary antibody: HRP-conjugated Goat anti-Rabbit IgG (H+L) (AS014) at 1:10000 dilution.
Lysates/proteins: 25 μ g per lane.
Blocking buffer: 3% nonfat dry milk in TBST.
Detection: ECL Basic Kit (RM00020).
Exposure time: 90s.