

DDI1 Rabbit pAb

Catalog No.: A14468

Basic Information

Observed MW

44kDa

Calculated MW

44kDa

Category

Primary antibody

Applications

ELISA, WB

Cross-Reactivity

Human, Mouse

Background

Predicted to enable aspartic-type endopeptidase activity. Involved in several processes, including cellular response to hydroxyurea; proteasomal protein catabolic process; and regulation of DNA stability.

Recommended Dilutions

WB 1:500 - 1:2000

Immunogen Information

Gene ID

414301

Swiss Prot

Q8WTU0

Immunogen

Recombinant fusion protein containing a sequence corresponding to amino acids 97-396 of human DDI1 (NP_001001711.1).

Synonyms

DDI1

Contact

 | 400-999-6126

 | cn.market@abclonal.com.cn

 | www.abclonal.com.cn

Product Information

Source

Rabbit

Isotype

IgG

Purification

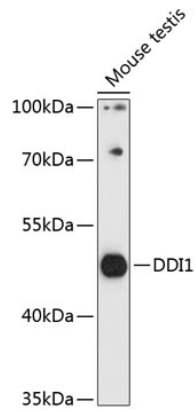
Affinity purification

Storage

Store at -20°C. Avoid freeze / thaw cycles.

Buffer: PBS with 0.01% thimerosal, 50% glycerol, pH7.3.

Validation Data



Western blot analysis of lysates from mouse testis, using DDI1 Rabbit pAb (A14468) at 1:3000 dilution.
Secondary antibody: HRP Goat Anti-Rabbit IgG (H+L) (AS014) at 1:10000 dilution.
Lysates/proteins: 25µg per lane.
Blocking buffer: 3% nonfat dry milk in TBST.
Detection: ECL Basic Kit (RM00020).
Exposure time: 90s.