

TRH Rabbit pAb

Catalog No.: A14472

Basic Information

Observed MW

27kDa

Calculated MW

27kDa

Category

Primary antibody

Applications

ELISA, WB, IF/ICC

Cross-Reactivity

Human, Mouse, Rat

Background

This gene encodes a member of the thyrotropin-releasing hormone family. Cleavage of the encoded proprotein releases mature thyrotropin-releasing hormone, which is a tripeptide hypothalamic regulatory hormone. The human proprotein contains six thyrotropin-releasing hormone tripeptides. Thyrotropin-releasing hormone is involved in the regulation and release of thyroid-stimulating hormone, as well as prolactin. Deficiency of this hormone has been associated with hypothalamic hypothyroidism.

Recommended Dilutions

WB 1:500 - 1:2000

IF/ICC 1:50 - 1:200

Immunogen Information

Gene ID

7200

Swiss Prot

P20396

Immunogen

A synthetic peptide corresponding to a sequence within amino acids 143-242 of human TRH (NP_009048.1).

Synonyms

TRF; Pro-TRH; TRH

Contact

☎ | 400-999-6126

✉ | cn.market@abclonal.com.cn

🌐 | www.abclonal.com.cn

Product Information

Source

Rabbit

Isotype

IgG

Purification

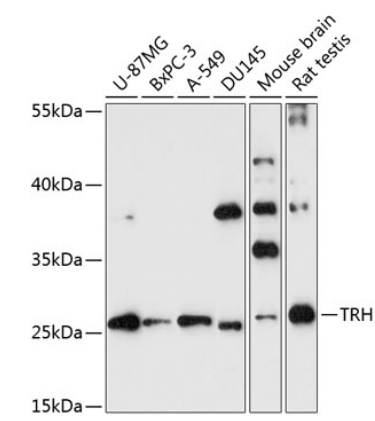
Affinity purification

Storage

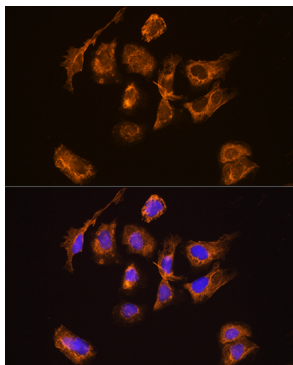
Store at -20°C. Avoid freeze / thaw cycles.

Buffer: PBS with 0.01% thimerosal, 50% glycerol, pH7.3.

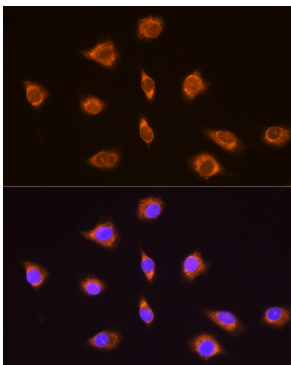
Validation Data



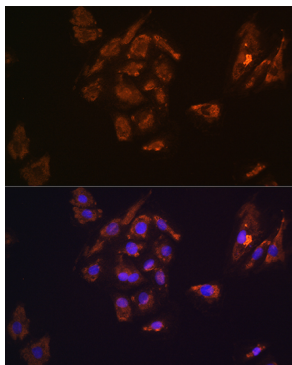
Western blot analysis of various lysates using TRH Rabbit pAb (A14472) at 1:3000 dilution.
Secondary antibody: HRP Goat Anti-Rabbit IgG (H+L) (AS014) at 1:10000 dilution.
Lysates/proteins: 25µg per lane.
Blocking buffer: 3% nonfat dry milk in TBST.
Detection: ECL Basic Kit (RM00020).
Exposure time: 90s.



Immunofluorescence analysis of U2OS cells using TRH Rabbit pAb (A14472) at dilution of 1:100. Secondary antibody: Cy3 Goat Anti-Rabbit IgG (H+L) (AS007) at 1:500 dilution. Blue: DAPI for nuclear staining.



Immunofluorescence analysis of L929 cells using TRH Rabbit pAb (A14472) at dilution of 1:100. Secondary antibody: Cy3 Goat Anti-Rabbit IgG (H+L) (AS007) at 1:500 dilution. Blue: DAPI for nuclear staining.



Immunofluorescence analysis of H9C2 cells using TRH Rabbit pAb (A14472) at dilution of 1:100. Secondary antibody: Cy3 Goat Anti-Rabbit IgG (H+L) (AS007) at 1:500 dilution. Blue: DAPI for nuclear staining.