

RANBP6 Rabbit pAb

Catalog No.: A14477

Basic Information

Observed MW

140kDa

Calculated MW

125kDa

Category

Primary antibody

Applications

ELISA, WB

Cross-Reactivity

Mouse, Rat

Background

Predicted to enable nuclear import signal receptor activity and nuclear localization sequence binding activity. Predicted to be involved in protein import into nucleus. Predicted to be active in cytoplasm and nucleus.

Recommended Dilutions

WB 1:500 - 1:2000

Immunogen Information

Gene ID

26953

Swiss Prot

O60518

Immunogen

Recombinant fusion protein containing a sequence corresponding to amino acids 1-70 of human RANBP6 (NP_036548.1).

Synonyms

RANBP6

Contact

☎ | 400-999-6126

✉ | cn.market@abclonal.com.cn

🌐 | www.abclonal.com.cn

Product Information

Source

Rabbit

Isotype

IgG

Purification

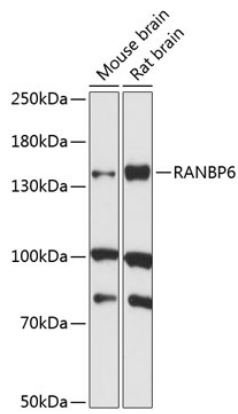
Affinity purification

Storage

Store at -20°C. Avoid freeze / thaw cycles.

Buffer: PBS with 0.01% thimerosal, 50% glycerol, pH7.3.

Validation Data



Western blot analysis of various lysates using RANBP6 Rabbit pAb (A14477) at 1:1000 dilution.
Secondary antibody: HRP Goat Anti-Rabbit IgG (H+L) (AS014) at 1:10000 dilution.
Lysates/proteins: 25µg per lane.
Blocking buffer: 3% nonfat dry milk in TBST.
Detection: ECL Basic Kit (RM00020).
Exposure time: 30s.